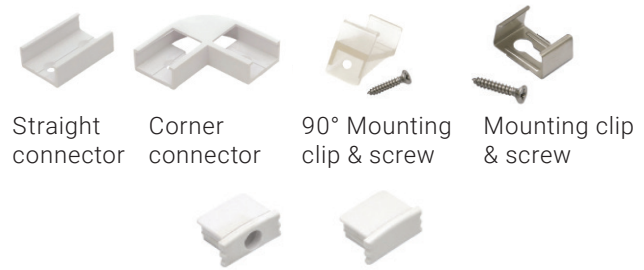
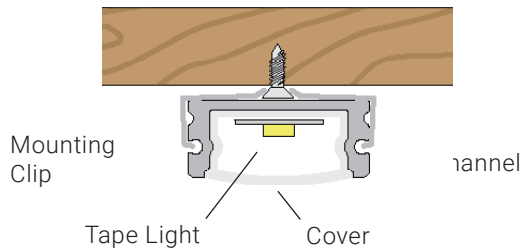


Surfa® 1, 2, 2X, 3 & 6 Surface-Mount Continua™ Aluminum Channels



1. Before installing the tape light in the channel, test the connection to power. If using a full spool of tape, connect one end of the tape to DC power and turn power on. If using a cut section of tape, attach the connector to the tape and then connect to DC power.

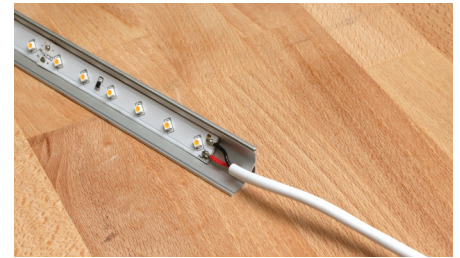
2. Channel end caps are available in both open (left) and closed (right) models. The open end cap lets the power wire pass from the inside of the channel to the DC power supply.



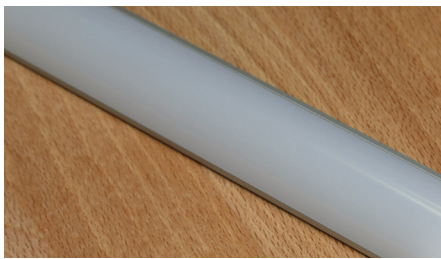
3. Insert the tape light into the channel by peeling off the cover on the adhesive backing and pressing the tape in a straight line from one end of the channel to the other to ensure flat, even adhesion.



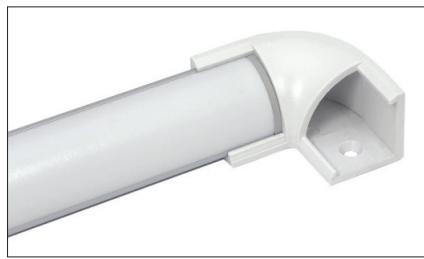
4. Insert the power wire through the open end cap before attaching to the DC power supply.



5. Connect the power wire to the tape, either by soldering or using a Tape Light Splice Connector.



6. Put the cover in place by squeezing the sides and pressing the cover down into the grooves at the top of the channel, moving from one end to the other.



7. If using corner or straight connectors to join multiple channels, measure and place the connectors before installing.



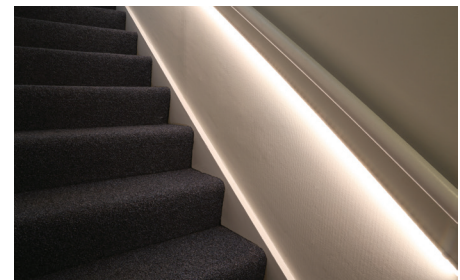
8. Insert the end caps into the ends of the channel with even pressure on both sides to ensure a snug fit.



9. Use a ruler to place the mounting clips (included) near the location of the ends of the channels.



10. Secure the channel into the clips.



11. Connect to DC power.