

## ThruLine™ Selector Under Cabinet LED Fixture



The ThruLine Selector LED Under Cabinet Fixture is the next generation model of Alloy's line of direct-wire ThruLine LED fixtures. Featuring a toggle switch so you can choose between 2700K and 3000K warm whites and 4000K neutral white light, this LED bar also has a premium diffusion lens for hotspot-free light. These LED fixtures connect directly to AC power, with no need for external power, so installation is quick and easy. The ThruLine Selector's bright light can be dimmed with a common AC dimmer switch, or set to two brightness levels with the onboard toggle switch.

Item #	Length	Color Temp. (Kelvins)	CRI	Watts	Diode Quantity	Lumens (2700K/3000K/4200K - max.)
AL-03-02-12001-WH	9 in.	2700K / 3000K / 4000K	94+	4W	32	201 / 210 / 228
AL-03-02-12011-WH	14 in.		94+	7W	36	364 / 399 / 450
AL-03-02-12021-WH	22 in.		94+	11W	72	624 / 639 / 682
AL-03-02-12031-WH	32 in.		94+	15W	108	839 / 894 / 980

Input Voltage	120V AC
Dimmable	With TRIAC dimmers
Width	4 inches
Height	1 inch
Housing	Aluminum
Finish	White
Diode Type	2835 SMD
Location	Dry
Certs/Ratings	ETL Listed
Warranty	5 years



### Features

- Three white color temperatures
- Two-way brightness switch
- Dimmable with TRIAC dimmers
- Aluminum housing
- Diffuser cover
- Knockouts for easy hardwiring
- Includes cable connector and interconnector plug



### Accessories

One interconnector and wire connector harness is included with each fixture. Other accessories (sold separately) are: AC Power Cable to connect a fixture to an outlet, AC Splice Cable to hardwire a fixture to power, and Interconnector Cables for connecting fixtures together.



AC Splice Cable (sold separately)  
AL-03-01-9951-WH - (6 foot - white)  
AL-03-01-9952-BL - (6 foot - black)

AC Power Cable (sold separately)  
AL-03-01-9901-WH - (6 foot - white)  
AL-03-01-9912-BL - (6 foot - black)

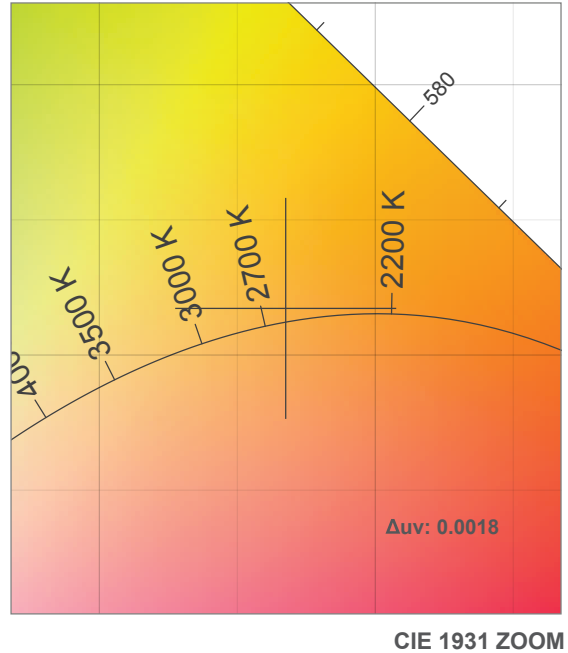
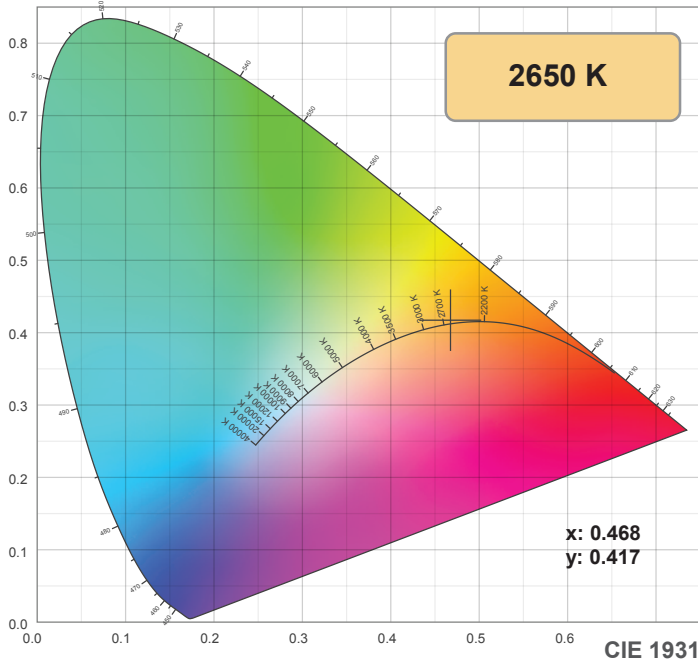


Interconnector and wire connector (included)

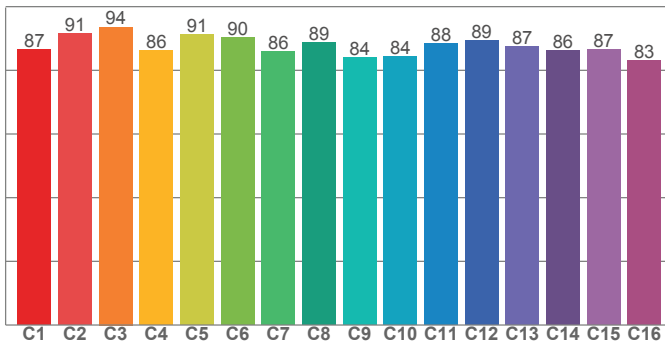


Interconnector Cable (sold separately)  
AL-03-01-9921-WH - (12 inch - white)  
AL-03-01-9922-BL - (12 inch - black)  
AL-03-01-9931-WH - (36 inch - white)  
AL-03-01-9932-BL - (36 inch - black)

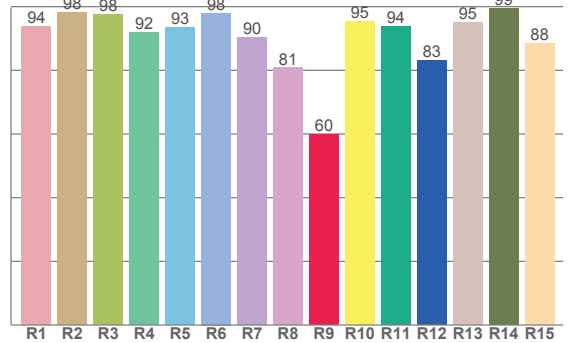
2700K



TM30: 87.7



CRI: 93.0 (R1-R8)



CRI R values, only R1-R8 are used to calculate final CRI value

R1	R2	R3	R4	R5	R6	R7	R8	R9	R10	R11	R12	R13	R14	R15
93.8	98.3	97.7	91.9	93.4	98.0	90.3	80.8	60.0	95.3	93.8	83.2	95.2	99.4	88.3

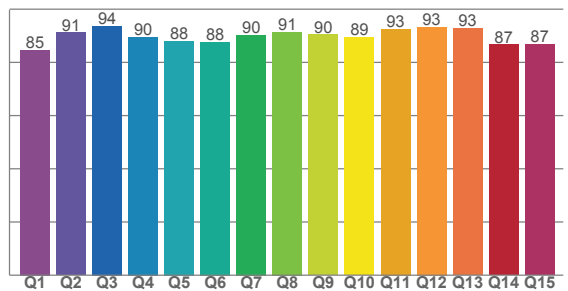
TM30 C values, 16 binned values out of total of 99 C values

C1	C2	C3	C4	C5	C6	C7	C8	C9	C10	C11	C12	C13	C14	C15	C16
86.5	91.5	93.6	86.3	91.2	90.4	86.0	88.6	84.0	84.3	88.4	89.4	87.4	86.2	86.6	83.0

CQS Q values

Q1	Q2	Q3	Q4	Q5	Q6	Q7	Q8	Q9	Q10	Q11	Q12	Q13	Q14	Q15
84.7	91.2	93.7	89.6	88.0	87.7	90.3	91.4	90.5	89.4	92.6	93.4	92.9	86.7	86.8

CQS: 89.5



### Color parameters

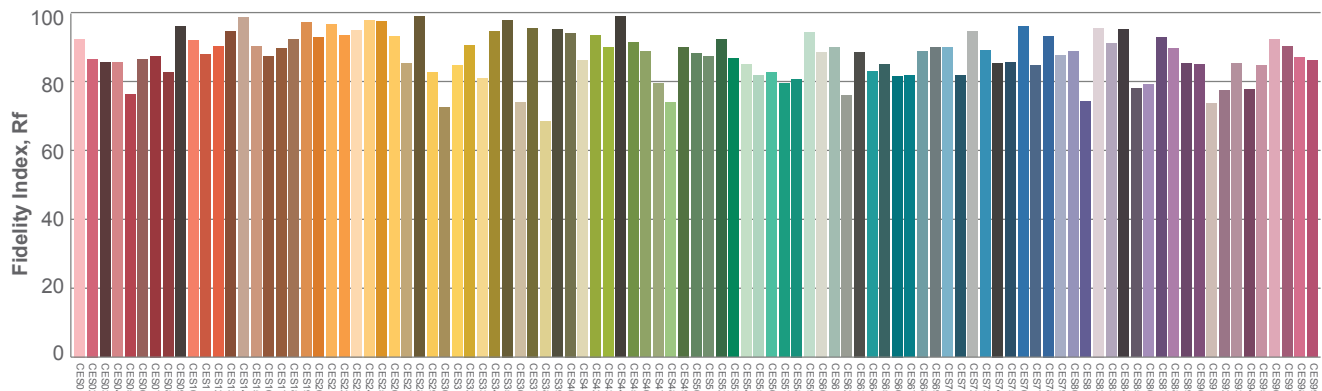
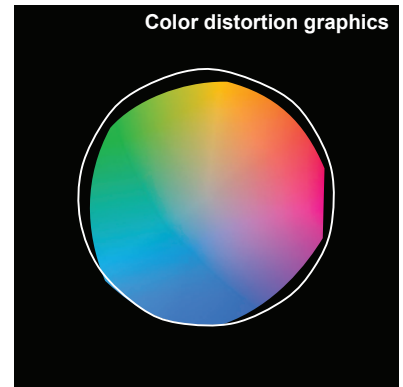
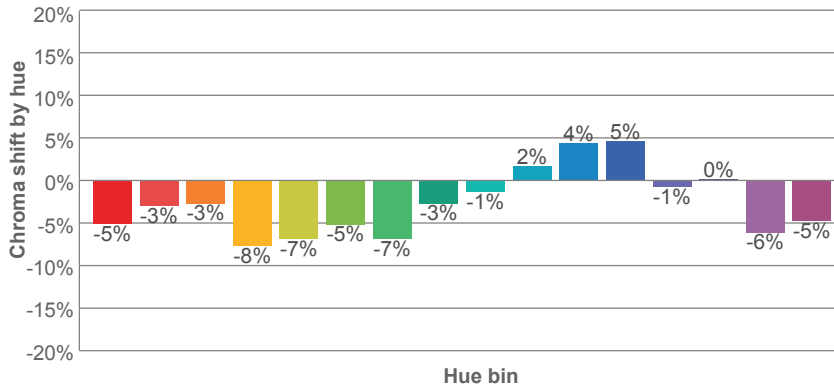
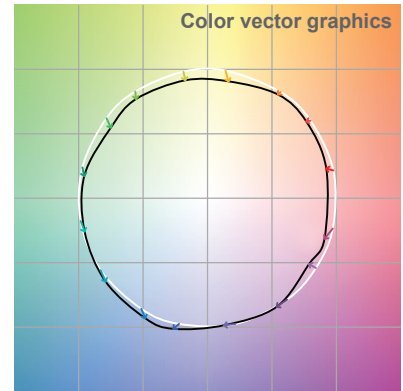
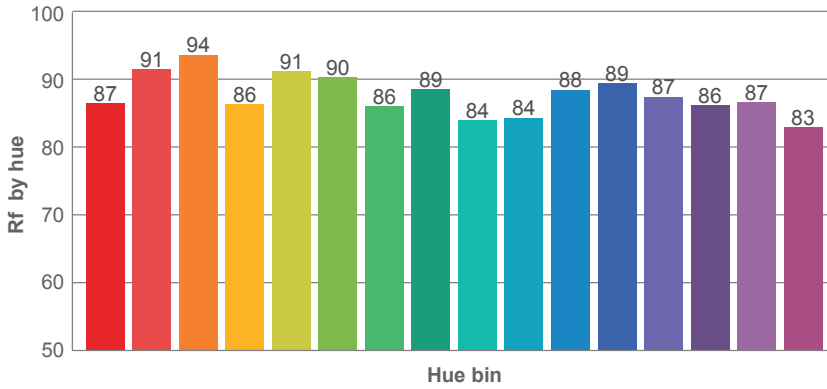
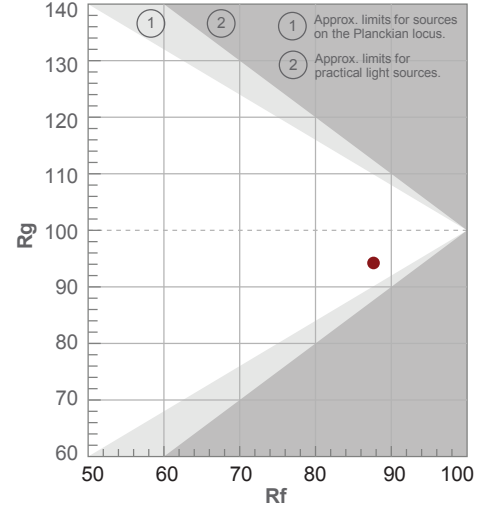
Color temperature	Color rendering index	Red component	Color fidelity	Color gamut	Color quality scale	Color coordinate cie 1931	Color coordinate cie 1931	Color coordinate	Color coordinate	Color division from black body
CCT	CRI	CRI R9	TM30 Rf	TM30 Rg	CQS	x	y	u	v	Δuv
2650 K	93.0	60.0	87.7	94.2	89.5	0.468	0.417	0.264	0.354	0.0018

2700K

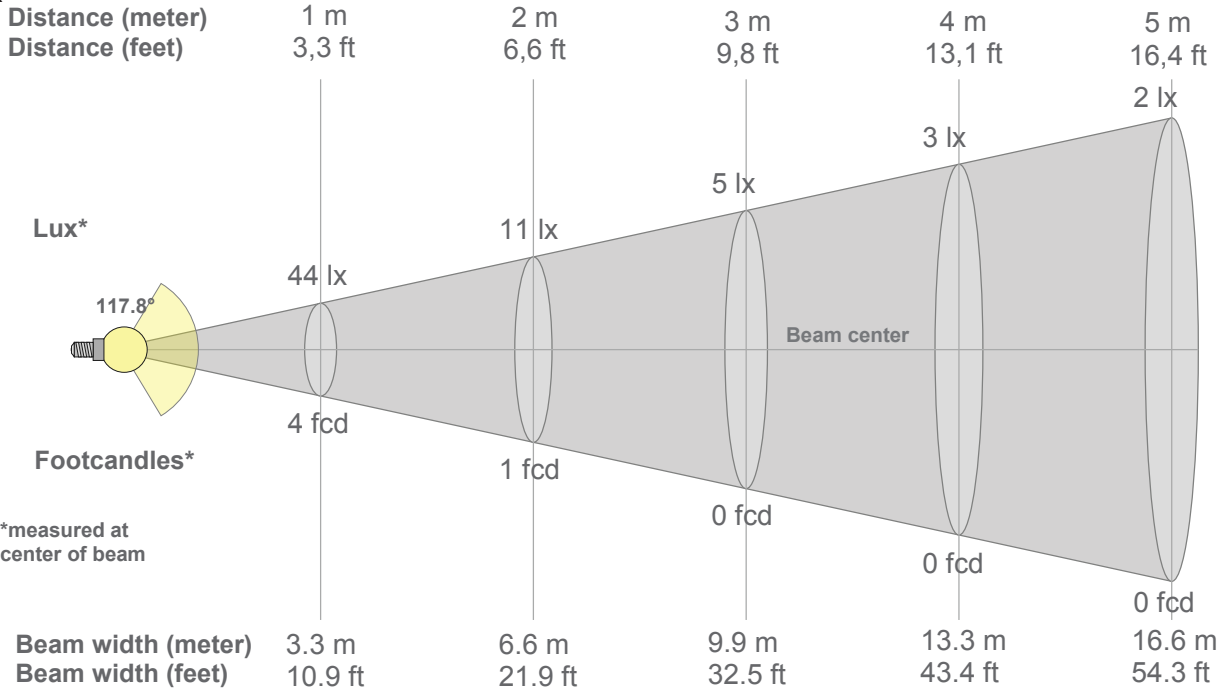
**Rf 87.7**  
Fidelity index Rf

**Rg 94.2**  
Gammut index Rg

Hue Bin	R <sub>f</sub>	Graphic shifts (%)	
		Chroma	Hue
1	87	-5%	3%
2	91	-3%	1%
3	94	-3%	1%
4	86	-8%	-4%
5	91	-7%	0%
6	90	-5%	3%
7	86	-7%	4%
8	89	-3%	6%
9	84	-1%	9%
10	84	2%	10%
11	88	4%	7%
12	89	5%	-3%
13	87	-1%	-9%
14	86	0%	-10%
15	87	-6%	0%
16	83	-5%	-9%



2700K



### Beam intensities from 1-20m

1m	2m	3m	4m	5m	6m	7m	8m	9m	10m	11m	12m	13m	14m	15m	16m	17m	18m	19m	20m
3.3ft	6.6ft	9.8ft	13.1ft	16.4ft	19.7ft	23ft	26.2ft	29.5ft	32.8ft	36.1ft	39.4ft	42.7ft	45.9ft	49.2ft	52.5ft	55.8ft	59.1ft	62.3ft	65.6ft
44lx	11lx	5lx	3lx	2lx	1lx	1lx	1lx	1lx	0lx	0lx	0lx	0lx	0lx	0lx	0lx	0lx	0lx	0lx	0lx
4.1fcd	1fcd	0.5fcd	0.3fcd	0.2fcd	0.1fcd	0.1fcd	0.1fcd	0.1fcd	0fcd	0fcd	0fcd	0fcd	0fcd	0fcd	0fcd	0fcd	0fcd	0fcd	0fcd

### Intensities in 0° c-plane

0°	5°	10°	15°	20°	25°	30°	35°	40°	45°	50°	55°	60°	65°	70°	75°	80°	85°	90°	95°
43.8	43.7	43.2	42.4	41.2	39.7	37.9	35.8	33.4	30.8	27.8	24.5	21.1	17.5	13.7	9.8	6.0	2.8	0.6	0.3
100%	100%	99%	97%	94%	91%	87%	82%	76%	70%	63%	56%	48%	40%	31%	22%	14%	6%	1%	1%

### Intensities in 90° c-plane

0°	5°	10°	15°	20°	25°	30°	35°	40°	45°	50°	55°	60°	65°	70°	75°	80°	85°	90°	95°
43.8	43.7	43.2	42.4	41.2	39.7	37.9	35.8	33.4	30.8	27.8	24.5	21.1	17.5	13.7	9.8	6.0	2.8	0.6	0.3
100%	100%	99%	97%	94%	91%	87%	82%	76%	70%	63%	56%	48%	40%	31%	22%	14%	6%	1%	1%

### Intensities in 180° c-plane

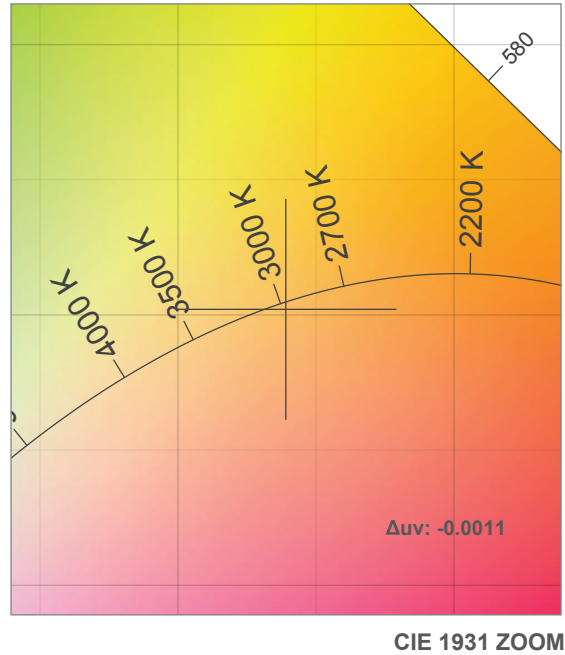
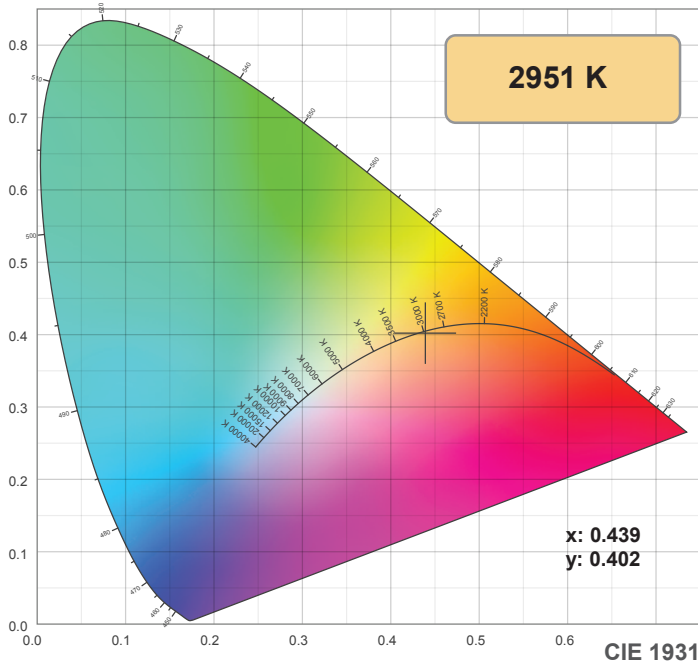
0°	5°	10°	15°	20°	25°	30°	35°	40°	45°	50°	55°	60°	65°	70°	75°	80°	85°	90°	95°
43.8	43.8	43.7	43.5	42.4	40.8	38.9	36.6	34.0	31.1	28.0	24.7	21.1	17.4	13.5	9.6	5.8	2.5	0.8	0.2
100%	100%	100%	99%	97%	93%	89%	84%	78%	71%	64%	56%	48%	40%	31%	22%	13%	6%	2%	1%

### Intensities in 270° c-plane

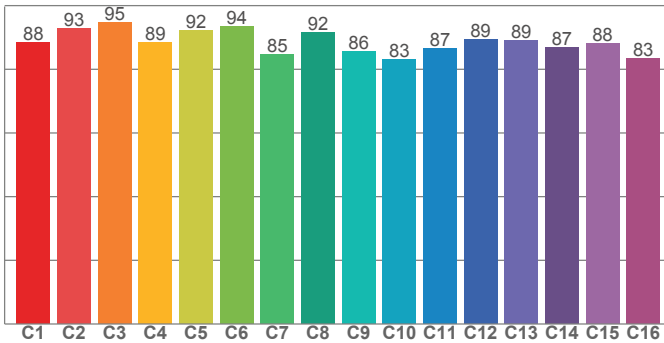
0°	5°	10°	15°	20°	25°	30°	35°	40°	45°	50°	55°	60°	65°	70°	75°	80°	85°	90°	95°
43.8	43.8	43.7	43.5	42.4	40.8	38.9	36.6	34.0	31.1	28.0	24.7	21.1	17.4	13.5	9.6	5.8	2.5	0.8	0.2
100%	100%	100%	99%	97%	93%	89%	84%	78%	71%	64%	56%	48%	40%	31%	22%	13%	6%	2%	1%

Beam angle 50%	Field angle 10%	Cutoff angle 2,5%	Intensity ratio in 120° cone	Intensity ratio in 90° cone
117.8°	164.5°	177.8°	76.0%	51.1%

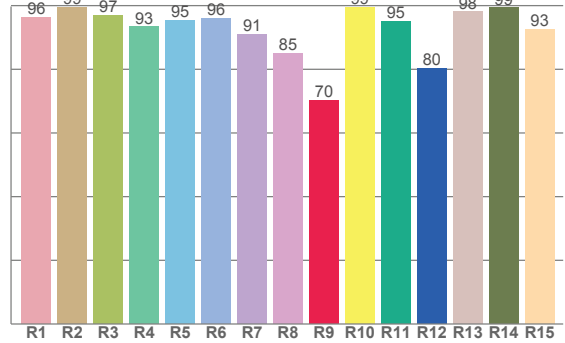
3000K



TM30: 88.7



CRI: 94.2 (R1-R8)



CRI R values, only R1-R8 are used to calculate final CRI value

R1	R2	R3	R4	R5	R6	R7	R8	R9	R10	R11	R12	R13	R14	R15
96.3	99.4	97.0	93.3	95.4	95.9	91.0	85.0	70.2	99.3	95.1	80.2	98.0	99.3	92.8

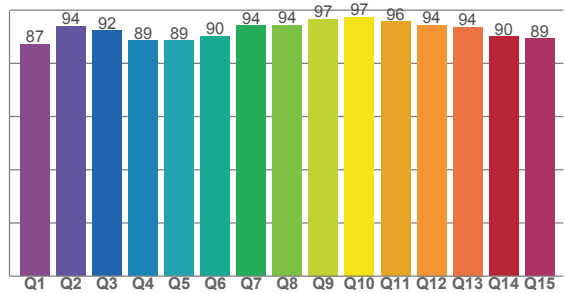
TM30 C values, 16 binned values out of total of 99 C values

C1	C2	C3	C4	C5	C6	C7	C8	C9	C10	C11	C12	C13	C14	C15	C16
88.4	92.7	94.5	88.5	92.2	93.5	84.7	91.5	85.6	83.1	86.6	89.3	88.9	86.8	88.2	83.4

CQS Q values

Q1	Q2	Q3	Q4	Q5	Q6	Q7	Q8	Q9	Q10	Q11	Q12	Q13	Q14	Q15
87.2	93.9	92.3	88.5	88.6	90.2	94.2	94.3	96.7	97.4	95.7	94.5	93.7	90.0	89.4

CQS: 91.7



## Color parameters

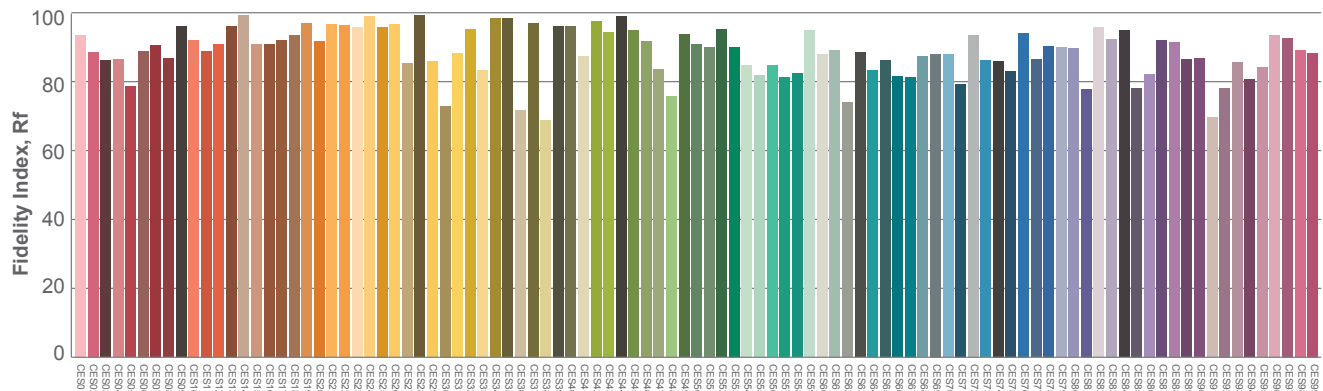
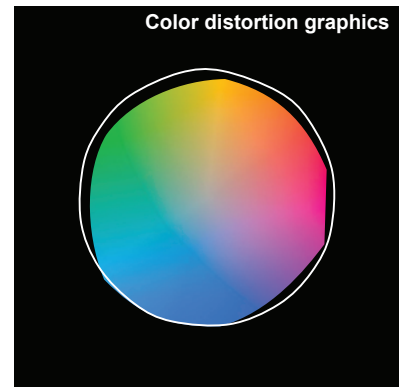
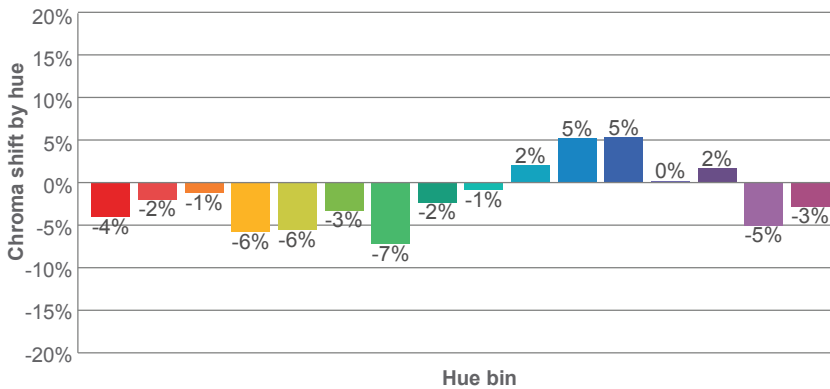
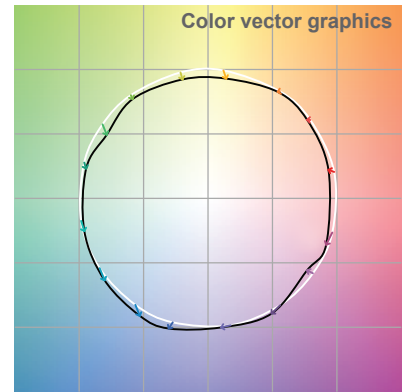
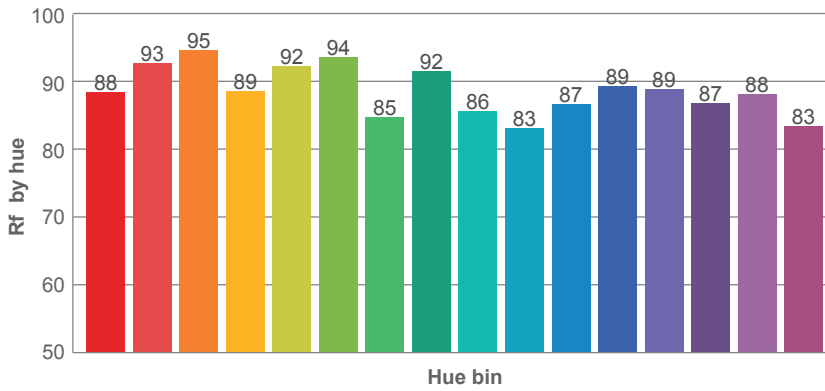
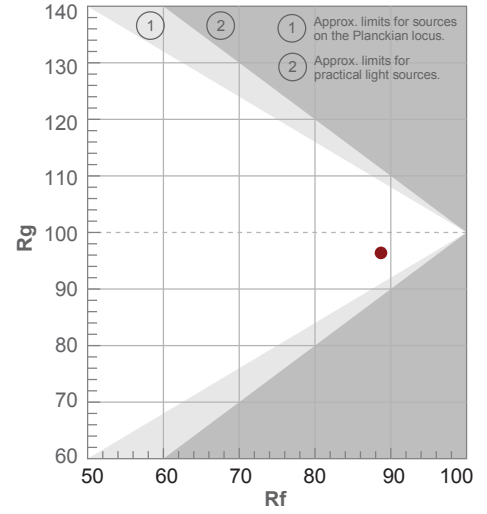
Color temperature	Color rendering index	Red component	Color fidelity	Color gamut	Color quality scale	Color coordinate cie 1931	Color coordinate cie 1931	Color coordinate	Color coordinate	Color deviation from black body
CCT	CRI	CRI R9	TM30 Rf	TM30 Rg	CQS	x	y	u	v	Δuv
2951 K	94.2	70.2	88.7	96.4	91.7	0.439	0.402	0.253	0.347	-0.0011

3000K

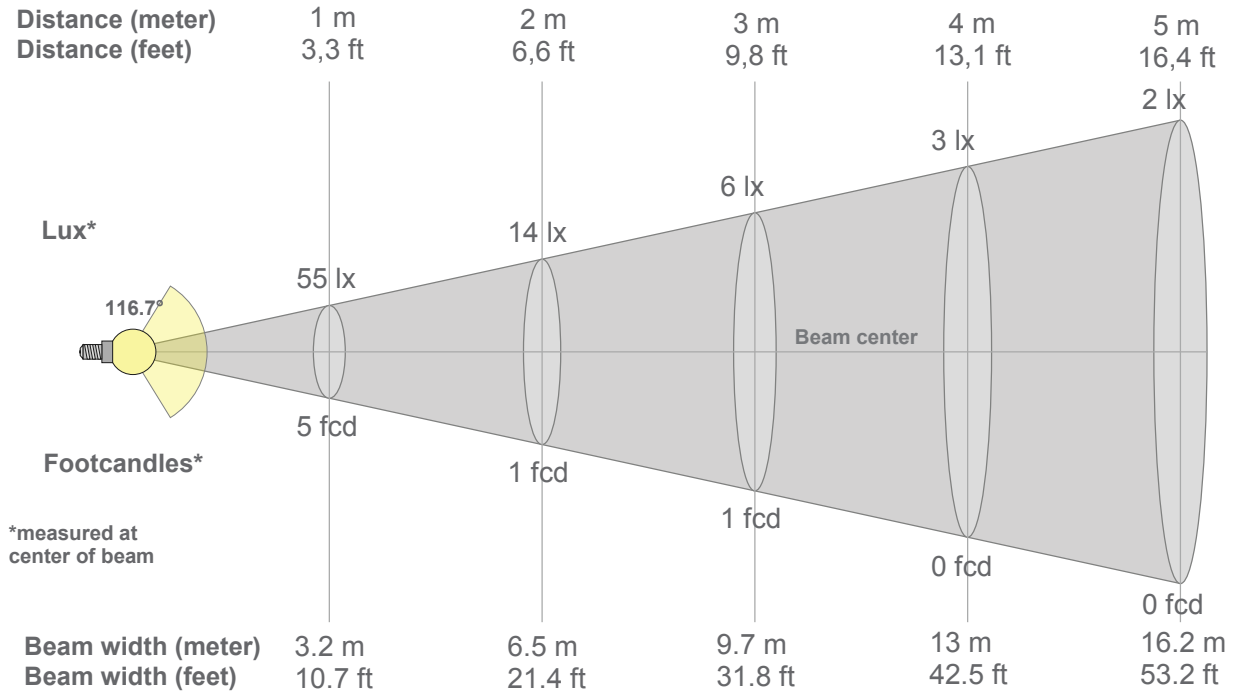
**Rf 88.7**  
Fidelity index Rf

**Rg 96.4**  
Gammut index Rg

Hue Bin	R <sub>f</sub>	Graphic shifts (%)	
		Chroma	Hue
1	88	-4%	2%
2	93	-2%	-2%
3	95	-1%	1%
4	89	-6%	-3%
5	92	-6%	0%
6	94	-3%	1%
7	85	-7%	5%
8	92	-2%	4%
9	86	-1%	8%
10	83	2%	10%
11	87	5%	8%
12	89	5%	-2%
13	89	0%	-8%
14	87	2%	-9%
15	88	-5%	-1%
16	83	-3%	-10%



3000K



### Beam intensities from 1-20m

1m	2m	3m	4m	5m	6m	7m	8m	9m	10m	11m	12m	13m	14m	15m	16m	17m	18m	19m	20m
3.3ft	6.6ft	9.8ft	13.1ft	16.4ft	19.7ft	23ft	26.2ft	29.5ft	32.8ft	36.1ft	39.4ft	42.7ft	45.9ft	49.2ft	52.5ft	55.8ft	59.1ft	62.3ft	65.6ft
55lx	14lx	6lx	3lx	2lx	2lx	1lx	1lx	1lx	1lx	0lx	0lx	0lx	0lx	0lx	0lx	0lx	0lx	0lx	0lx
5.1fcd	1.3fcd	0.6fcd	0.3fcd	0.2fcd	0.1fcd	0.1fcd	0.1fcd	0.1fcd	0.1fcd	0fcd	0fcd	0fcd	0fcd	0fcd	0fcd	0fcd	0fcd	0fcd	0fcd

### Intensities in 0° c-plane

0°	5°	10°	15°	20°	25°	30°	35°	40°	45°	50°	55°	60°	65°	70°	75°	80°	85°	90°	95°
55.2	54.9	54.4	53.4	51.9	49.9	47.6	44.8	41.7	38.3	34.5	30.5	26.1	21.5	16.6	11.8	7.1	3.2	0.7	0.2
100%	100%	99%	97%	94%	91%	86%	81%	76%	69%	63%	55%	47%	39%	30%	21%	13%	6%	1%	0%

### Intensities in 90° c-plane

0°	5°	10°	15°	20°	25°	30°	35°	40°	45°	50°	55°	60°	65°	70°	75°	80°	85°	90°	95°
55.2	54.9	54.4	53.4	51.9	49.9	47.6	44.8	41.7	38.3	34.5	30.5	26.1	21.5	16.6	11.8	7.1	3.2	0.7	0.2
100%	100%	99%	97%	94%	91%	86%	81%	76%	69%	63%	55%	47%	39%	30%	21%	13%	6%	1%	0%

### Intensities in 180° c-plane

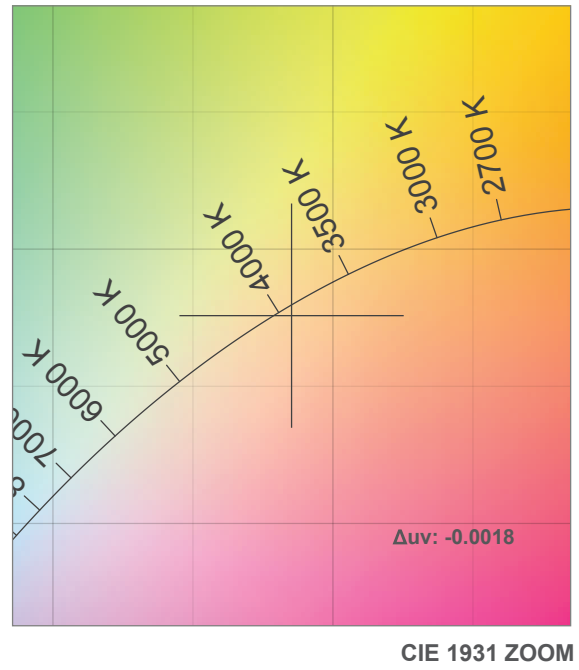
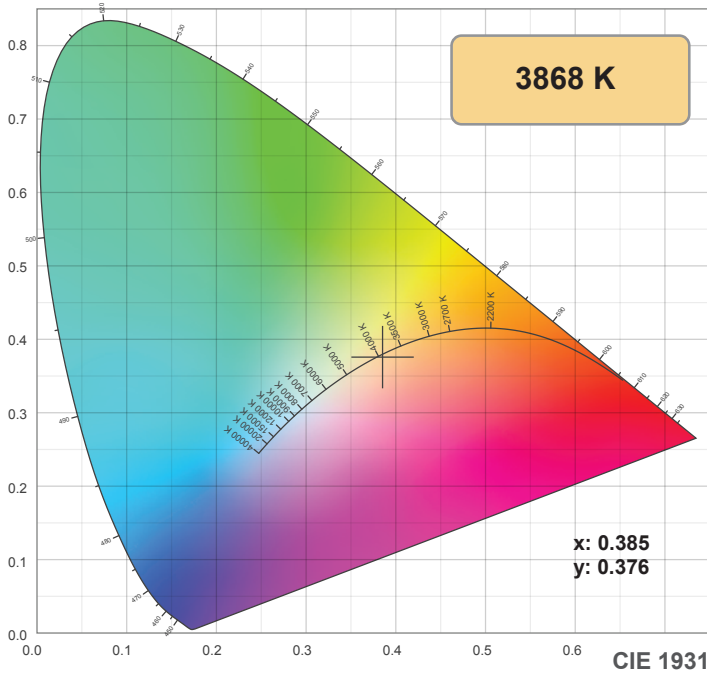
0°	5°	10°	15°	20°	25°	30°	35°	40°	45°	50°	55°	60°	65°	70°	75°	80°	85°	90°	95°
55.2	54.9	54.3	53.2	51.7	49.7	47.4	44.7	41.6	38.1	34.4	30.5	26.2	21.7	17.0	12.3	7.7	3.7	0.9	0.3
100%	100%	98%	97%	94%	90%	86%	81%	75%	69%	62%	55%	47%	39%	31%	22%	14%	7%	2%	1%

### Intensities in 270° c-plane

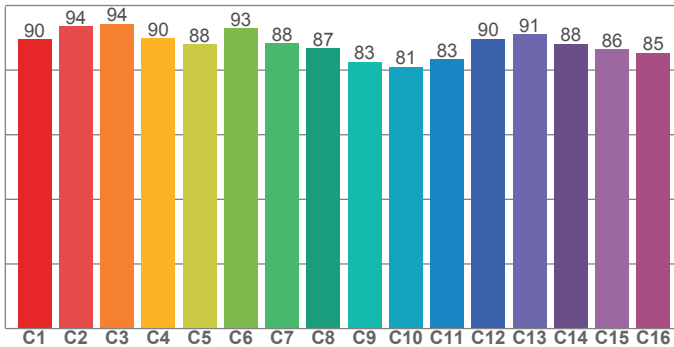
0°	5°	10°	15°	20°	25°	30°	35°	40°	45°	50°	55°	60°	65°	70°	75°	80°	85°	90°	95°
55.2	54.9	54.3	53.2	51.7	49.7	47.4	44.7	41.6	38.1	34.4	30.5	26.2	21.7	17.0	12.3	7.7	3.7	0.9	0.3
100%	100%	98%	97%	94%	90%	86%	81%	75%	69%	62%	55%	47%	39%	31%	22%	14%	7%	2%	1%

Beam angle 50%	Field angle 10%	Cutoff angle 2,5%	Intensity ratio in 120° cone	Intensity ratio in 90° cone
116.7°	164.2°	176.6°	75.9%	51.1%

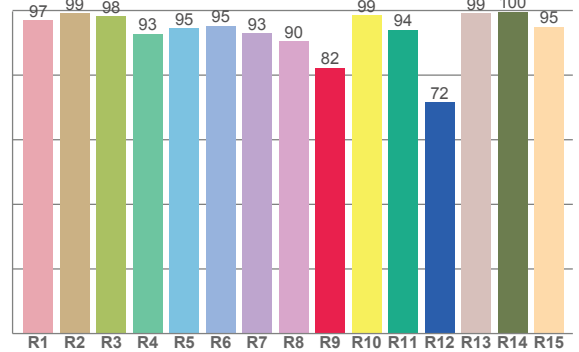
4000K



**TM30: 88.1**



**CRI: 95.1 (R1-R8)**



CRI R values, only R1-R8 are used to calculate final CRI value

R1	R2	R3	R4	R5	R6	R7	R8	R9	R10	R11	R12	R13	R14	R15
97.1	99.2	98.3	92.8	94.6	95.3	93.0	90.4	82.3	98.5	94.1	71.6	99.1	99.6	95.0

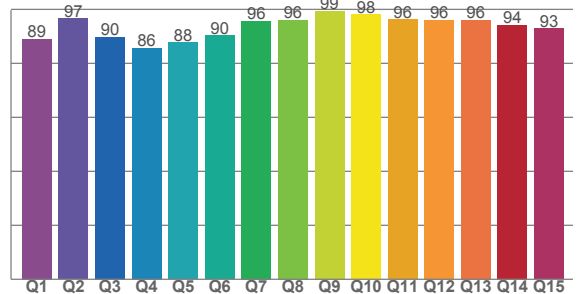
TM30 C values, 16 binned values out of total of 99 C values

C1	C2	C3	C4	C5	C6	C7	C8	C9	C10	C11	C12	C13	C14	C15	C16
89.5	93.6	94.3	89.8	88.0	92.9	88.3	86.7	82.5	81.1	83.3	89.7	91.1	88.2	86.4	85.3

CQS Q values

Q1	Q2	Q3	Q4	Q5	Q6	Q7	Q8	Q9	Q10	Q11	Q12	Q13	Q14	Q15
89.1	96.6	89.8	85.6	87.8	90.3	95.6	96.1	99.5	98.1	96.2	96.0	96.0	94.3	92.9

**CQS: 92.5**



**Color parameters**

Color temperature	Color rendering index	Red component	Color fidelity	Color gamut	Color quality scale	Color coordinate cie 1931	Color coordinate cie 1931	Color coordinate	Color coordinate	Color deviation from black body
CCT	CRI	CRI R9	TM30 Rf	TM30 Rg	CQS	x	y	u	v	Δuv
3868 K	95.1	82.3	88.1	97.1	92.5	0.385	0.376	0.229	0.335	-0.0018

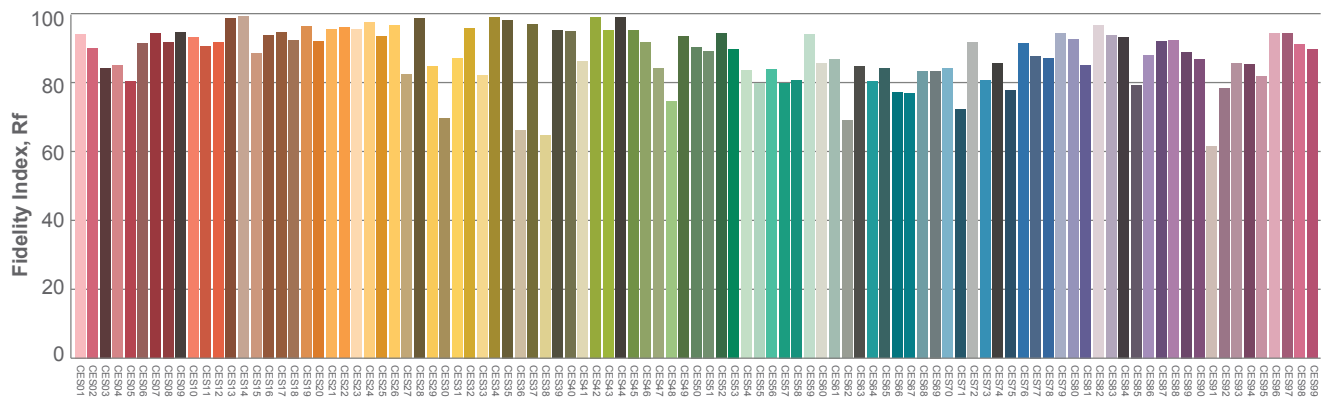
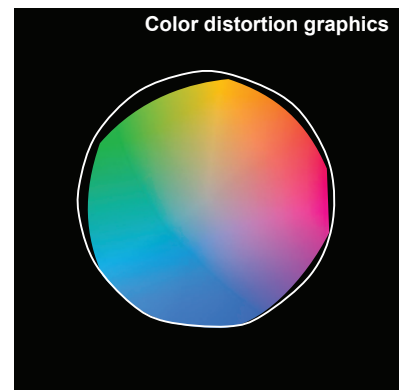
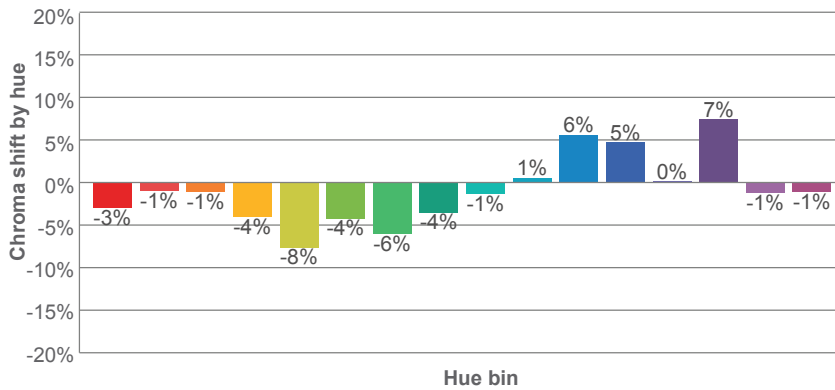
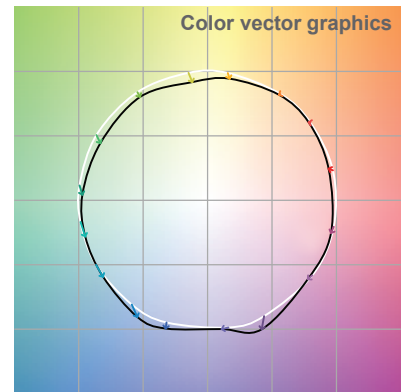
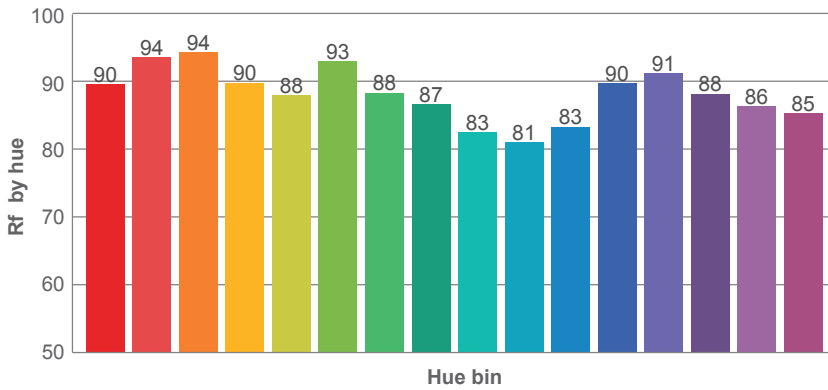
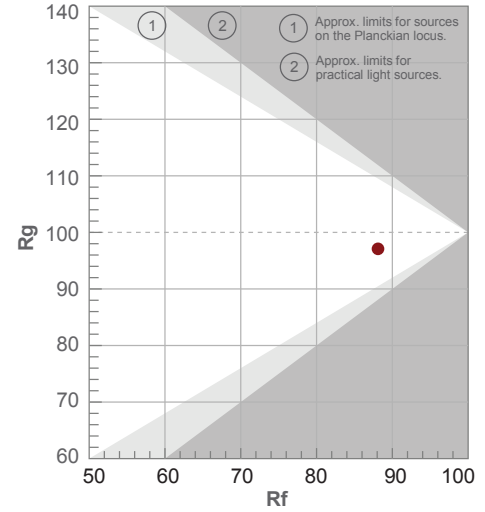


4000K

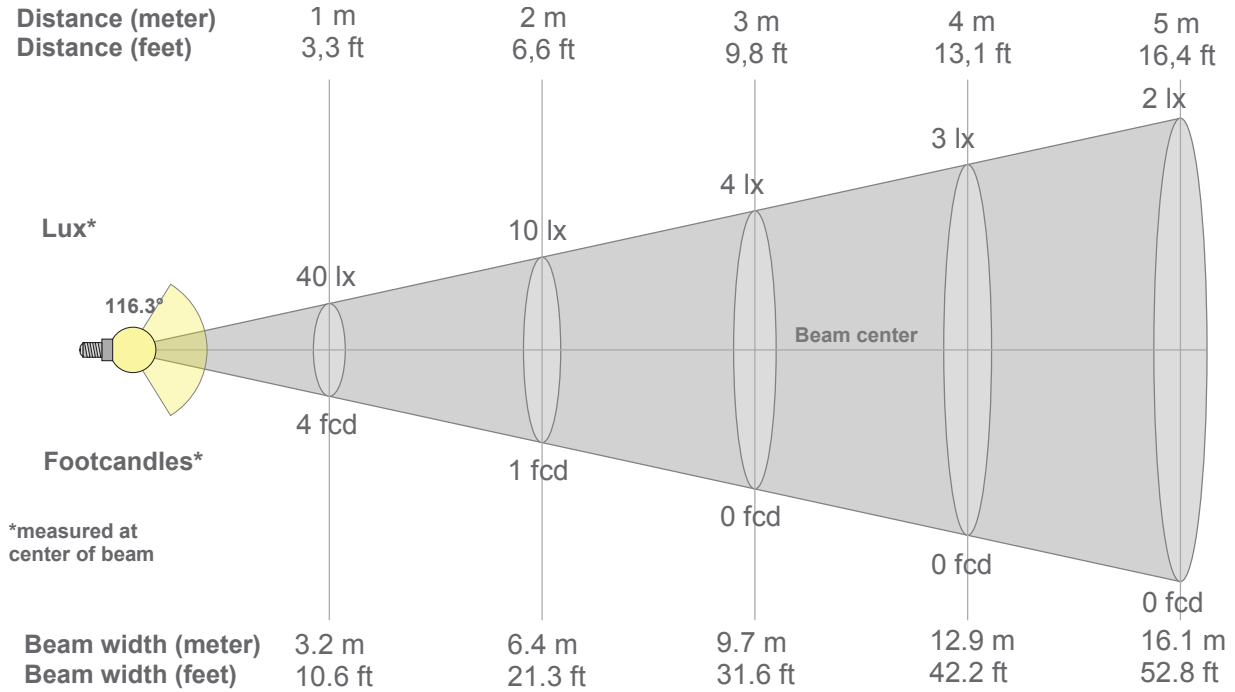
**Rf 88.1**  
Fidelity index Rf

**Rg 97.1**  
Gammut index Rg

Hue Bin	R <sub>f</sub>	Graphic shifts (%)	
		Chroma	Hue
1	90	-3%	2%
2	94	-1%	1%
3	94	-1%	1%
4	90	-4%	-2%
5	88	-8%	-1%
6	93	-4%	0%
7	88	-6%	4%
8	87	-4%	7%
9	83	-1%	12%
10	81	1%	11%
11	83	6%	9%
12	90	5%	0%
13	91	0%	-5%
14	88	7%	-7%
15	86	-1%	-5%
16	85	-1%	-5%



4000K



### Beam intensities from 1-20m

1m	2m	3m	4m	5m	6m	7m	8m	9m	10m	11m	12m	13m	14m	15m	16m	17m	18m	19m	20m
3.3ft	6.6ft	9.8ft	13.1ft	16.4ft	19.7ft	23ft	26.2ft	29.5ft	32.8ft	36.1ft	39.4ft	42.7ft	45.9ft	49.2ft	52.5ft	55.8ft	59.1ft	62.3ft	65.6ft
40lx	10lx	4lx	3lx	2lx	1lx	1lx	1lx	0lx	0lx	0lx	0lx	0lx	0lx	0lx	0lx	0lx	0lx	0lx	0lx
3.7fcd	0.9fcd	0.4fcd	0.2fcd	0.1fcd	0.1fcd	0.1fcd	0.1fcd	0fcd	0fcd	0fcd	0fcd	0fcd	0fcd	0fcd	0fcd	0fcd	0fcd	0fcd	0fcd

### Intensities in 0° c-plane

0°	5°	10°	15°	20°	25°	30°	35°	40°	45°	50°	55°	60°	65°	70°	75°	80°	85°	90°	95°
40.1	39.9	39.4	38.7	37.4	36.0	34.3	32.3	30.0	27.6	24.9	22.0	18.9	15.5	12.0	8.4	5.1	2.2	0.4	0.2
100%	100%	98%	97%	93%	90%	86%	81%	75%	69%	62%	55%	47%	39%	30%	21%	13%	6%	1%	1%

### Intensities in 90° c-plane

0°	5°	10°	15°	20°	25°	30°	35°	40°	45°	50°	55°	60°	65°	70°	75°	80°	85°	90°	95°
40.1	39.9	39.4	38.7	37.4	36.0	34.3	32.3	30.0	27.6	24.9	22.0	18.9	15.5	12.0	8.4	5.1	2.2	0.4	0.2
100%	100%	98%	97%	93%	90%	86%	81%	75%	69%	62%	55%	47%	39%	30%	21%	13%	6%	1%	1%

### Intensities in 180° c-plane

0°	5°	10°	15°	20°	25°	30°	35°	40°	45°	50°	55°	60°	65°	70°	75°	80°	85°	90°	95°
40.1	39.9	39.3	38.4	37.3	35.9	34.2	32.2	29.9	27.5	24.8	22.0	19.0	15.6	12.2	8.8	5.5	2.5	0.8	0.2
100%	100%	98%	96%	93%	90%	85%	80%	75%	69%	62%	55%	47%	39%	31%	22%	14%	6%	2%	0%

### Intensities in 270° c-plane

0°	5°	10°	15°	20°	25°	30°	35°	40°	45°	50°	55°	60°	65°	70°	75°	80°	85°	90°	95°
40.1	39.9	39.3	38.4	37.3	35.9	34.2	32.2	29.9	27.5	24.8	22.0	19.0	15.6	12.2	8.8	5.5	2.5	0.8	0.2
100%	100%	98%	96%	93%	90%	85%	80%	75%	69%	62%	55%	47%	39%	31%	22%	14%	6%	2%	0%

Beam angle 50%	Field angle 10%	Cutoff angle 2,5%	Intensity ratio in 120° cone	Intensity ratio in 90° cone
116.3°	164.1°	177.6°	76.0%	51.2%