

ThruLine™ Slim Selector Premium Diffusion LED Fixture

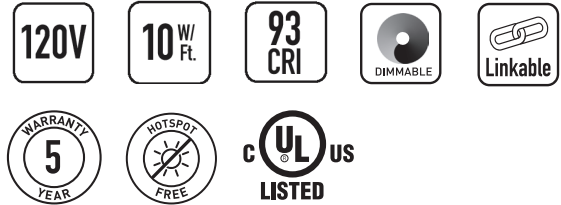


The ThruLine Slim Selector Premium Diffusion LED Fixture is the narrow, space-saving model of Alloy’s line of direct connect 120V LED fixtures. This LED fixture has a premium diffusion lens for hotspot-free light, and connects directly to AC house power, with no need for an external power supply, so installation is quick and easy. The ThruLine Slim’s bright, warm light can be dimmed with an TRIAC dimmer switch and provides hotspot-free lighting, even when reflected on glossy surfaces. It even includes adjustable mounting brackets so you can direct the light just where you want it.

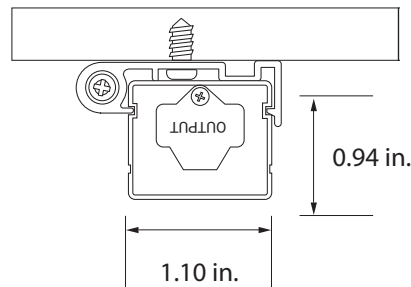
- Slim, low profile design
- Selectable CCT (3000K, 3500K, 4000K)
- Aluminum housing
- Connects directly to 120V AC
- Premium diffuser cover
- Adjustable 0° - 90°

TECHNICAL INFORMATION

Input Voltage	120V AC
Dimmable	TRIAC Dimmer
Width	1.1 in.
Height	0.94 in.
Housing	Aluminum
Max. Daisy-chain	300W
Diode Type	2835
Environment	Indoors, Dry
Certs/Ratings	UL Listed , Energy Star, Title 24
Warranty	5 years



DIMENSIONS



PRODUCT INFORMATION

Item #	Length	Color Temp. (Kelvins)	CRI	Watts	Lumens	Finish
AL-10-02-12012-BR	12 in.	3000K, 3500K, 4000K	93	10W	750	bronze
AL-10-02-12012-WH	12 in.	3000K, 3500K, 4000K	93	10W	750	white
AL-10-02-12022-BR	16 in.	3000K, 3500K, 4000K	93	13W	950	bronze
AL-10-02-12022-WH	16 in.	3000K, 3500K, 4000K	93	13W	950	white
AL-10-02-12032-BR	24 in.	3000K, 3500K, 4000K	93	20W	1500	bronze
AL-10-02-12032-WH	24 in.	3000K, 3500K, 4000K	93	20W	1500	white
AL-10-02-12042-BR	32 in.	3000K, 3500K, 4000K	93	26W	2000	bronze
AL-10-02-12042-WH	32 in.	3000K, 3500K, 4000K	93	26W	2000	white

ALLOY LED⁺ Specifications

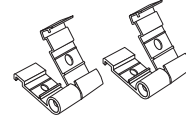
ACCESSORIES (INCLUDED)



Interconnector and wire connector

(1 interconnector/2 wire connectors included)

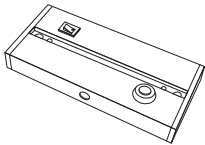
AL-10-02-9961-WH (white)
AL-10-02-9962-BR (bronze)



Adjustable mounting brackets, screws and screw anchors (1 pair included - white or bronze)

AL-10-02-9986-WH (white pair)
AL-10-02-9987-BR (bronze pair)

ACCESSORIES (SOLD SEPARATELY)

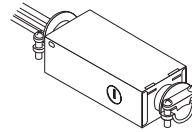


Junction Box with Occupancy Sensor

AL-10-02-9991-OS-WH (white)

Meets the UL 1598 standard as a hard-wired junction box.

Dim. (LxWxH): 8.125 x 3.75 x 1 in.
On/off toggle switch
Knockouts: (2) 1/2 in.
Cable clamps: (2) incl.
Sensor Type: on/off
Time until off: 30 seconds ~
30 minutes (adjustable)



Junction Box

AL-10-02-9992-WH (white)

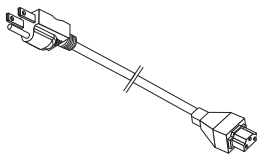
Meets the UL 1598 standard as a hard-wired junction box

Dim. (LxWxH): 3.50 x 1.75 x 1.25 in.
Knockouts: (4) 1/2 in.
Cable clamps: (2) incl.

Compatible Cable (Sold separately)

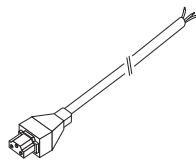
AC Splice Cable

AL-10-02-9951-WH (6 foot - white)
AL-10-02-9952-BL (6 foot - black)



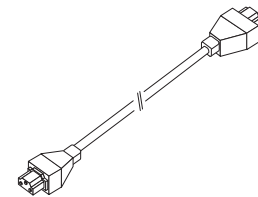
AC Power Cable

AL-10-02-9901-WH (6 foot - white)
AL-10-02-9912-BL (6 foot - black)



AC Splice Cable

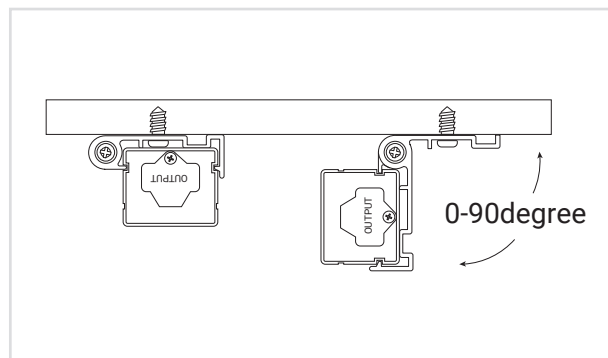
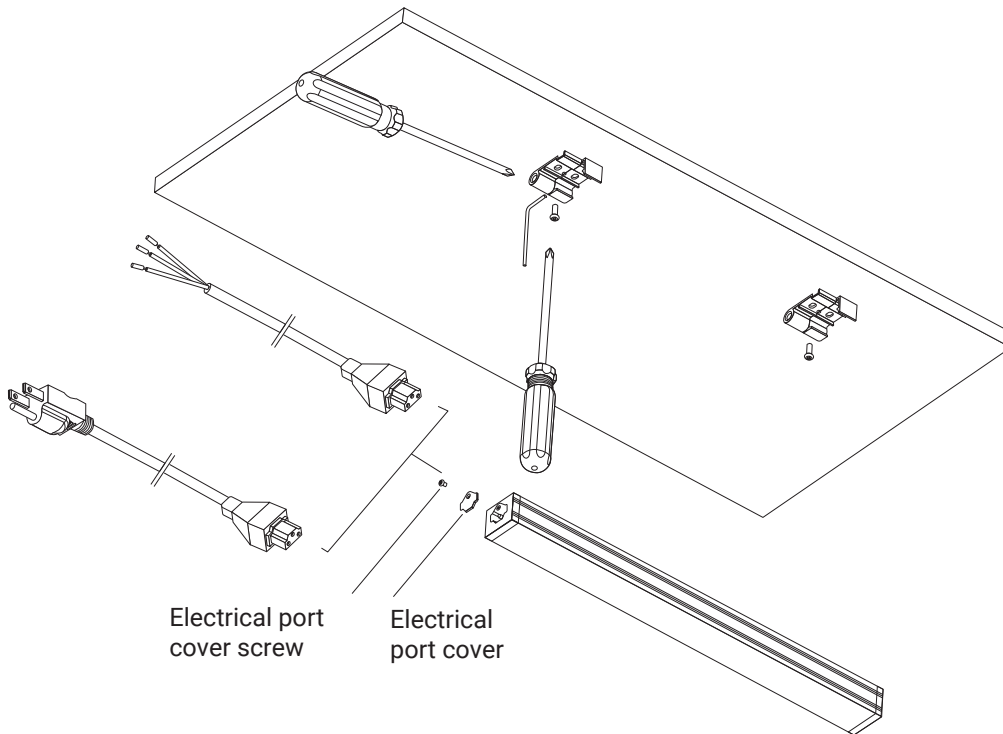
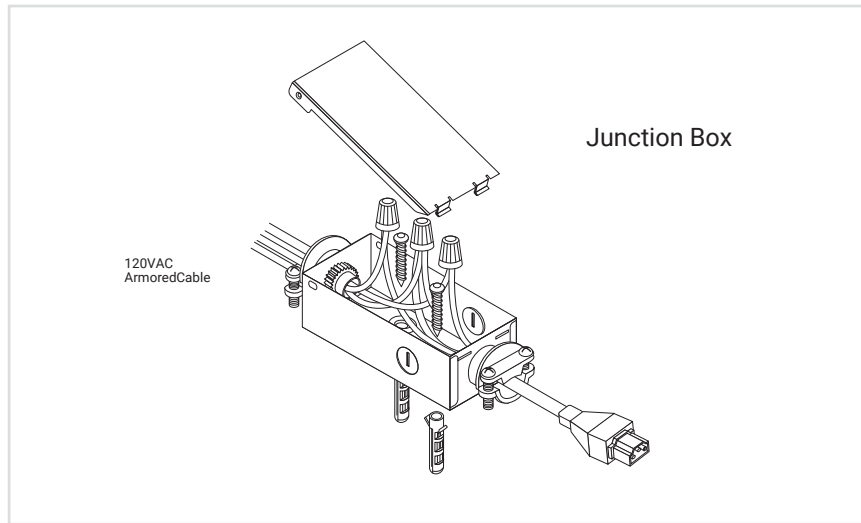
AL-10-02-9951-WH (6 foot - white)
AL-10-02-9952-BL (6 foot - black)



Interconnector Cable

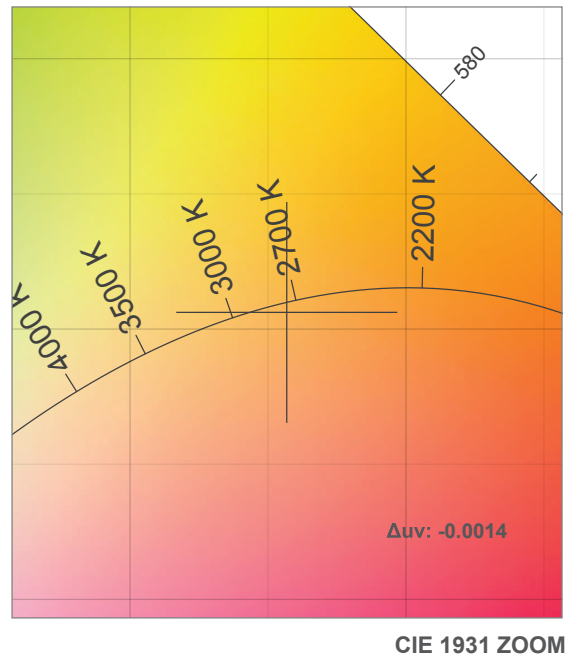
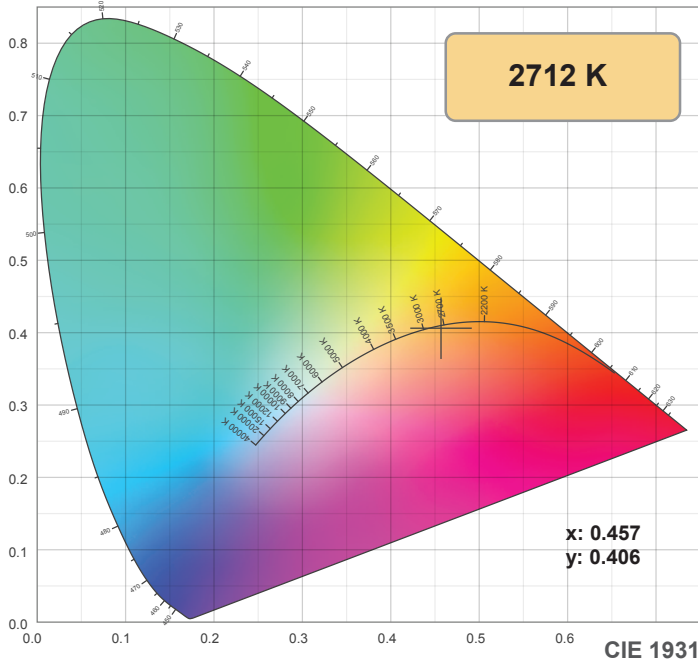
AL-10-02-9919-WH (6 inch - white)
AL-10-02-9920-BL (6 inch - black)
AL-10-02-9921-WH (12 inch - white)
AL-10-02-9922-BL (12 inch - black)
AL-10-02-9925-WH (24 inch - white)
AL-10-02-9926-BL (24 inch - black)
AL-10-02-9945-WH (72 inch - white)
AL-10-02-9946-BL (72 inch - black)

INSTALLATION

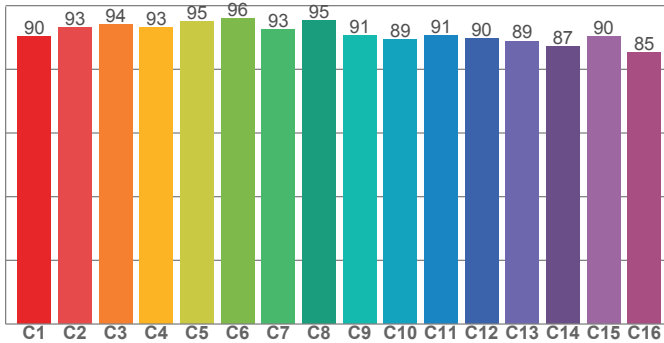


Note: specifications are representative of the diode type and not a particular tape light article.

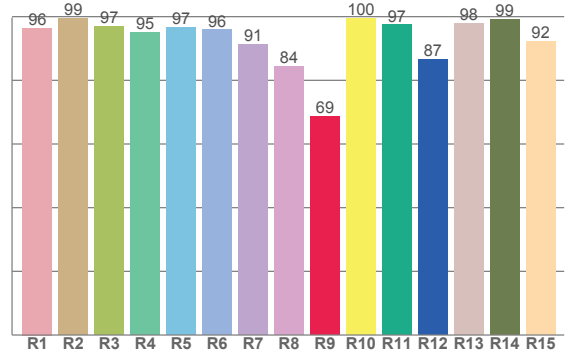
2700K



TM30: 91.4



CRI: 94.5 (R1-R8)



CRI R values, only R1-R8 are used to calculate final CRI value

R1	R2	R3	R4	R5	R6	R7	R8	R9	R10	R11	R12	R13	R14	R15
96.4	99.5	97.0	95.1	96.7	95.8	91.2	84.4	68.7	99.6	97.4	86.6	97.9	99.2	92.3

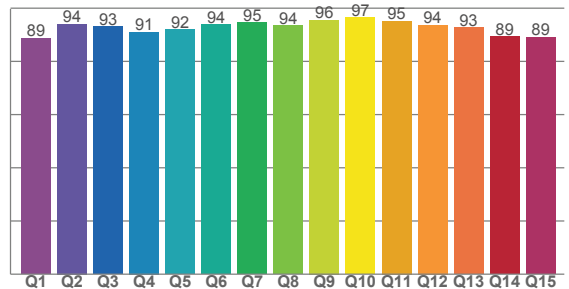
TM30 C values, 16 binned values out of total of 99 C values

C1	C2	C3	C4	C5	C6	C7	C8	C9	C10	C11	C12	C13	C14	C15	C16
90.3	93.2	94.1	93.0	95.0	96.1	92.6	95.3	90.6	89.3	90.6	89.5	88.9	87.1	90.3	85.3

CQS Q values

Q1	Q2	Q3	Q4	Q5	Q6	Q7	Q8	Q9	Q10	Q11	Q12	Q13	Q14	Q15
88.7	94.1	93.0	91.1	91.9	93.8	94.6	93.5	95.6	96.6	95.2	93.7	92.8	89.3	89.1

CQS: 92.3



Color parameters

Color temperature	Color rendering index	Red component	Color fidelity	Color gamut	Color quality scale	Color coordinate cie 1931	Color coordinate cie 1931	Color coordinate	Color coordinate	Color division from black body
CCT	CRI	CRI R9	TM30 Rf	TM30 Rg	CQS	x	y	u	v	Δuv
2712 K	94.5	68.7	91.4	98.1	92.3	0.457	0.406	0.263	0.350	-0.0014

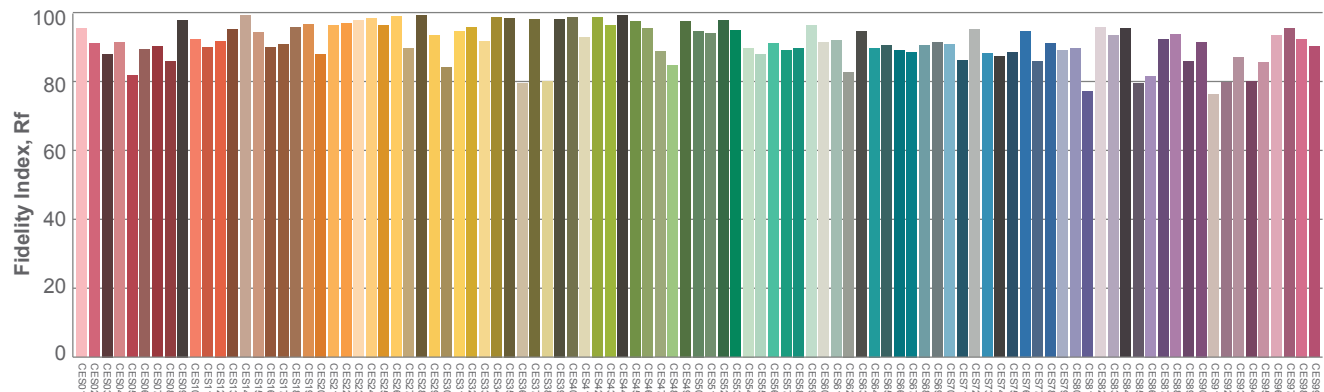
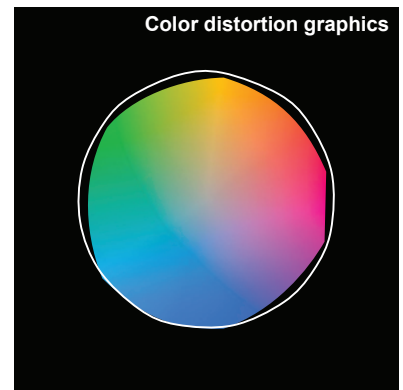
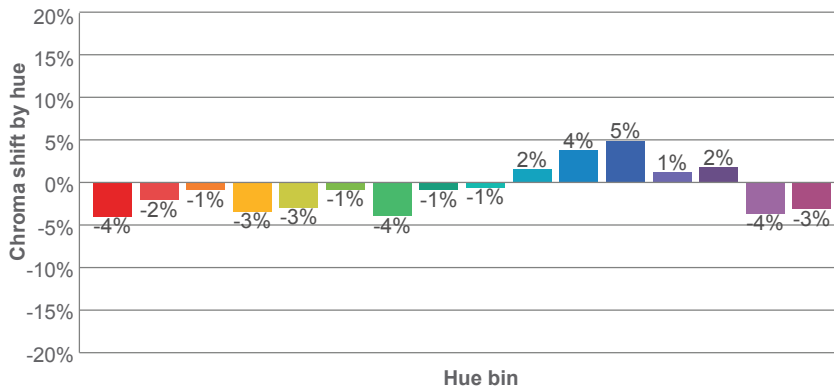
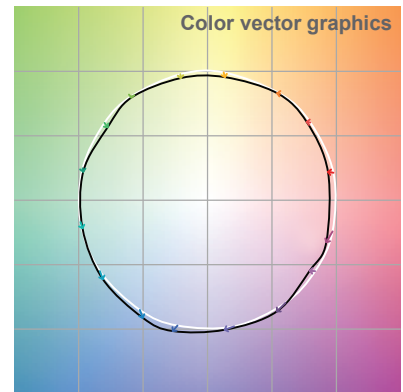
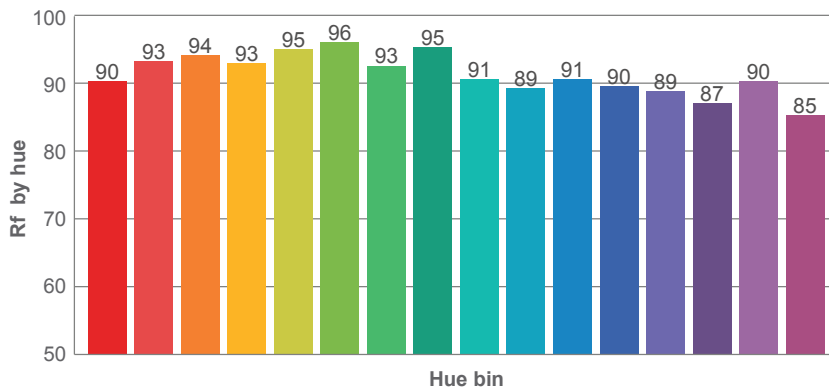
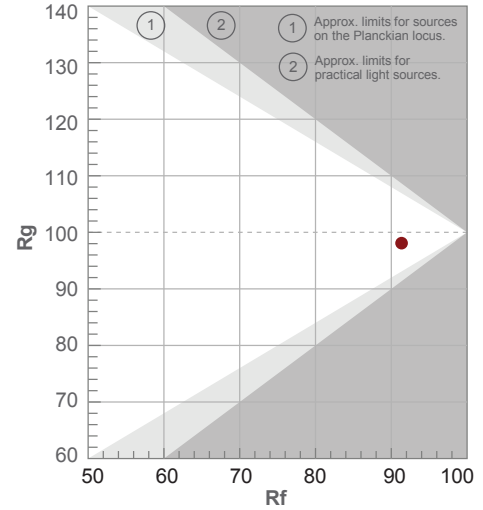
Note: specifications are representative of the diode type and not a particular tape light article.

2700K

Rf 91.4
Fidelity index Rf

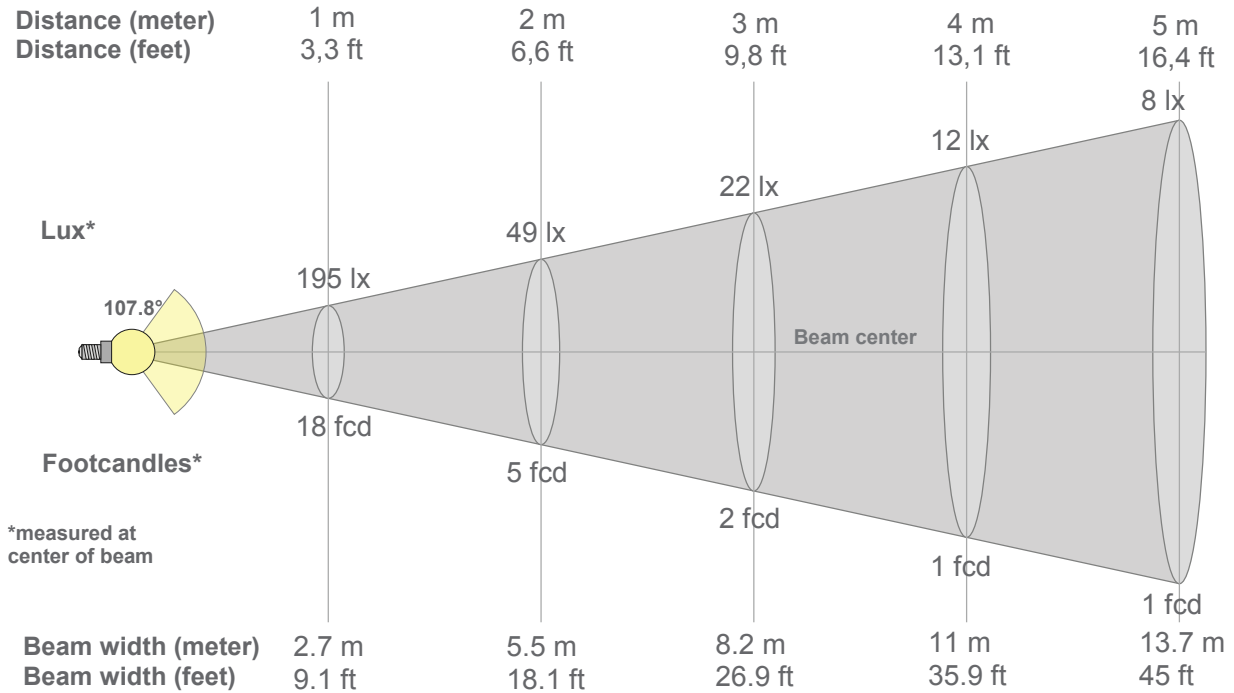
Rg 98.1
Gammut index Rg

Hue Bin	R _r	Graphic shifts (%)	
		Chroma	Hue
1	90	-4%	2%
2	93	-2%	2%
3	94	-1%	2%
4	93	-3%	-2%
5	95	-3%	0%
6	96	-1%	1%
7	93	-4%	1%
8	95	-1%	3%
9	91	-1%	5%
10	89	2%	6%
11	91	4%	5%
12	90	5%	-3%
13	89	1%	-8%
14	87	2%	-9%
15	90	-4%	-2%
16	85	-3%	-9%



Note: specifications are representative of the diode type and not a particular tape light article.

2700K



Beam intensities from 1-20m

1m	2m	3m	4m	5m	6m	7m	8m	9m	10m	11m	12m	13m	14m	15m	16m	17m	18m	19m	20m
3.3ft	6.6ft	9.8ft	13.1ft	16.4ft	19.7ft	23ft	26.2ft	29.5ft	32.8ft	36.1ft	39.4ft	42.7ft	45.9ft	49.2ft	52.5ft	55.8ft	59.1ft	62.3ft	65.6ft
195lx	49lx	22lx	12lx	8lx	5lx	4lx	3lx	2lx	2lx	2lx	1lx	1lx	1lx	1lx	1lx	1lx	1lx	1lx	0lx
18.1fcd	4.5fcd	2fcd	1.1fcd	0.7fcd	0.5fcd	0.4fcd	0.3fcd	0.2fcd	0.2fcd	0.1fcd	0.1fcd	0.1fcd	0.1fcd	0.1fcd	0.1fcd	0.1fcd	0.1fcd	0.1fcd	0fcd

Intensities in 0° c-plane

0°	5°	10°	15°	20°	25°	30°	35°	40°	45°	50°	55°	60°	65°	70°	75°	80°	85°	90°	95°
195	194	190	185	178	169	158	147	135	122	108	94	80	66	51	36	23	11	3	1
100%	99%	98%	95%	91%	87%	81%	76%	69%	63%	56%	48%	41%	34%	26%	19%	12%	5%	2%	0%

Intensities in 90° c-plane

0°	5°	10°	15°	20°	25°	30°	35°	40°	45°	50°	55°	60°	65°	70°	75°	80°	85°	90°	95°
195	194	190	185	178	169	158	147	135	122	108	94	80	66	51	36	23	11	3	1
100%	99%	98%	95%	91%	87%	81%	76%	69%	63%	56%	48%	41%	34%	26%	19%	12%	5%	2%	0%

Intensities in 180° c-plane

0°	5°	10°	15°	20°	25°	30°	35°	40°	45°	50°	55°	60°	65°	70°	75°	80°	85°	90°	95°
195	194	190	185	178	169	159	147	135	122	108	94	80	65	50	36	21	10	2	1
100%	100%	98%	95%	91%	87%	82%	76%	69%	63%	56%	48%	41%	33%	26%	18%	11%	5%	1%	0%

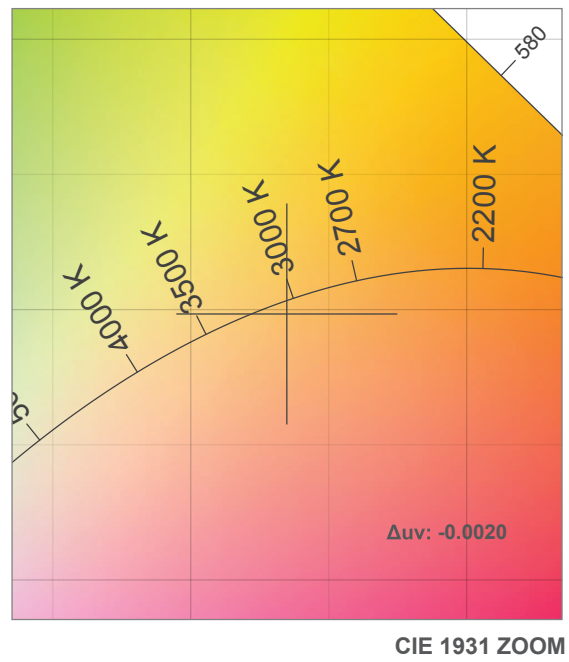
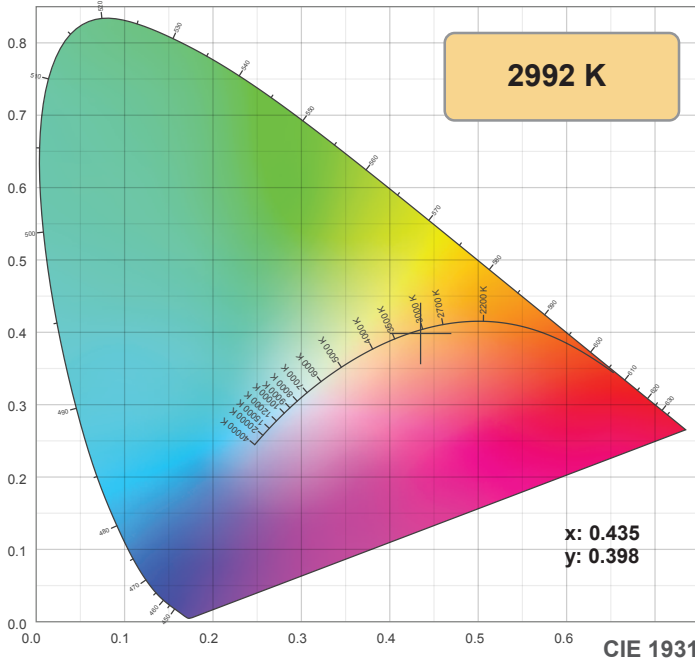
Intensities in 270° c-plane

0°	5°	10°	15°	20°	25°	30°	35°	40°	45°	50°	55°	60°	65°	70°	75°	80°	85°	90°	95°
195	194	190	185	178	169	159	147	135	122	108	94	80	65	50	36	21	10	2	1
100%	100%	98%	95%	91%	87%	82%	76%	69%	63%	56%	48%	41%	33%	26%	18%	11%	5%	1%	0%

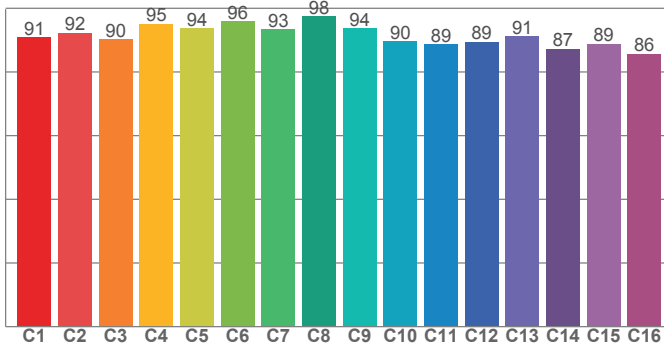
Beam angle 50%	Field angle 10%	Cutoff angle 2,5%	Intensity ratio in 120° cone	Intensity ratio in 90° cone
107.8°	161.9°	175.3°	77.7%	53.4%

Note: specifications are representative of the diode type and not a particular tape light article.

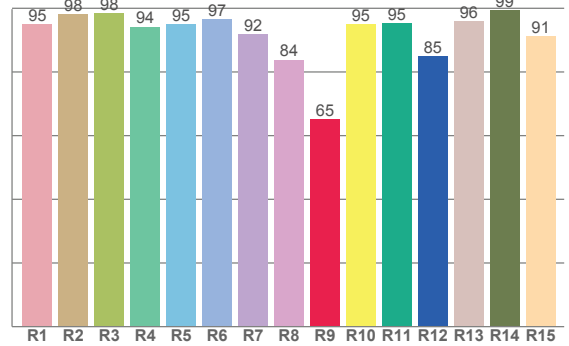
3000K



TM30: 91.6



CRI: 94.1 (R1-R8)



CRI R values, only R1-R8 are used to calculate final CRI value

R1	R2	R3	R4	R5	R6	R7	R8	R9	R10	R11	R12	R13	R14	R15
94.9	98.2	98.5	94.2	94.9	96.6	91.9	83.9	65.1	94.9	95.3	85.0	96.0	99.3	91.3

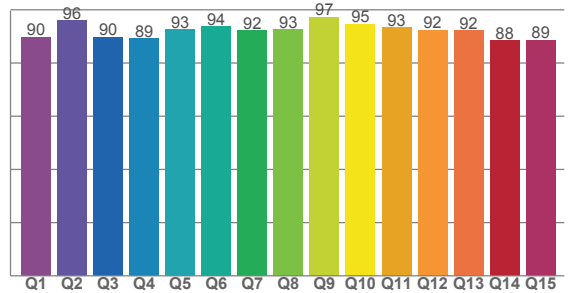
TM30 C values, 16 binned values out of total of 99 C values

C1	C2	C3	C4	C5	C6	C7	C8	C9	C10	C11	C12	C13	C14	C15	C16
90.8	92.3	90.3	95.2	93.7	95.9	93.4	97.5	93.7	89.7	88.7	89.4	91.2	87.3	88.8	85.6

CQS Q values

Q1	Q2	Q3	Q4	Q5	Q6	Q7	Q8	Q9	Q10	Q11	Q12	Q13	Q14	Q15
89.7	96.0	89.7	89.2	92.5	93.8	92.2	92.6	97.3	94.6	93.3	92.3	92.2	88.5	88.7

CQS: 91.7



Color parameters

Color temperature	Color rendering index	Red component	Color fidelity	Color gamut	Color quality scale	Color coordinate cie 1931	Color coordinate cie 1931	Color coordinate	Color coordinate	Color deviation from black body
CCT	CRI	CRI R9	TM30 Rf	TM30 Rg	CQS	x	y	u	v	Δuv
2992 K	94.1	65.1	91.6	99.7	91.7	0.435	0.398	0.252	0.346	-0.0020

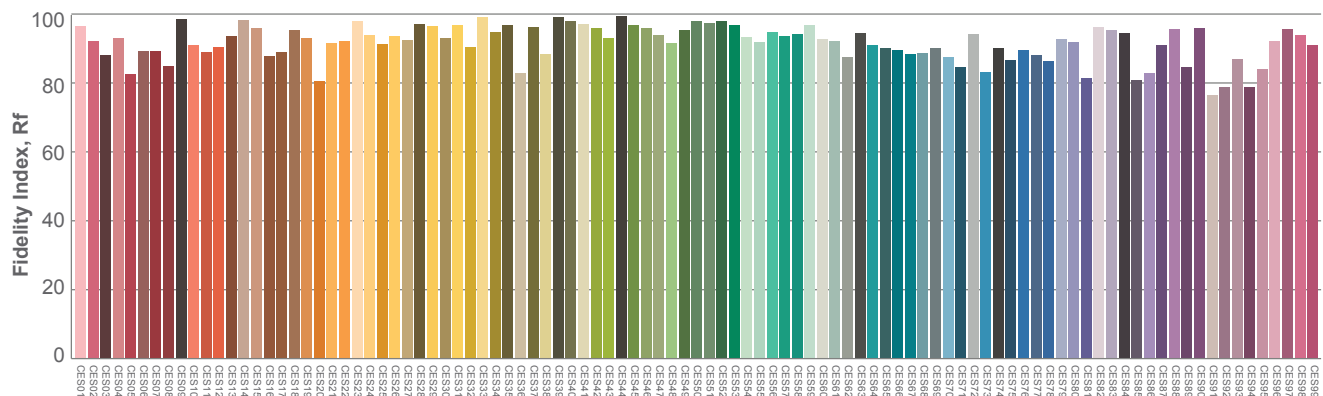
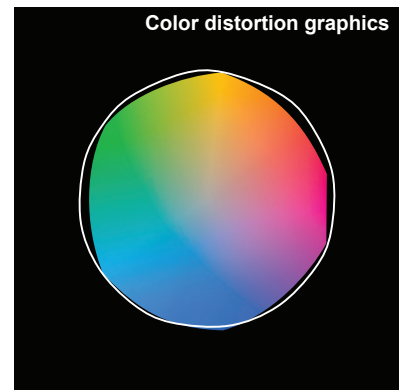
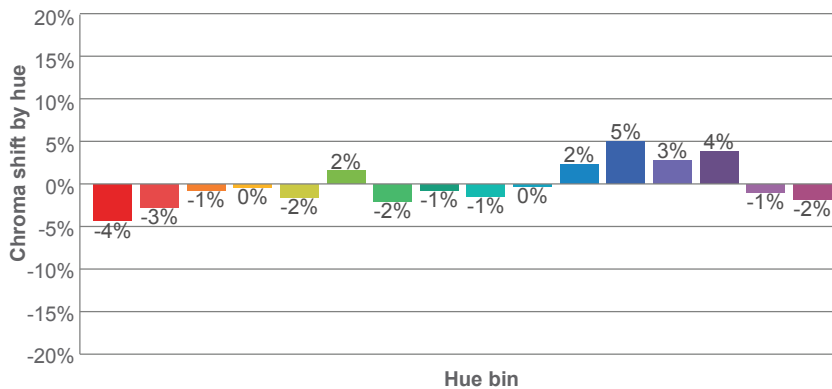
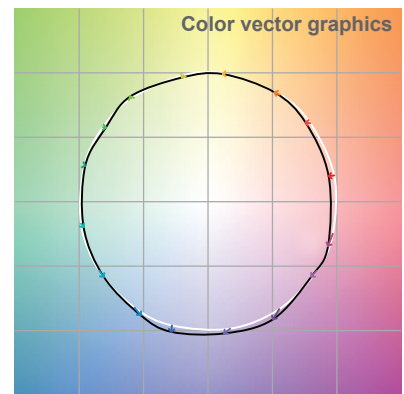
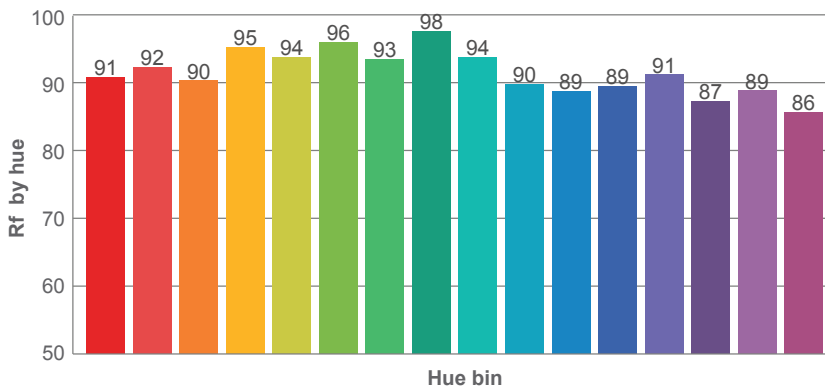
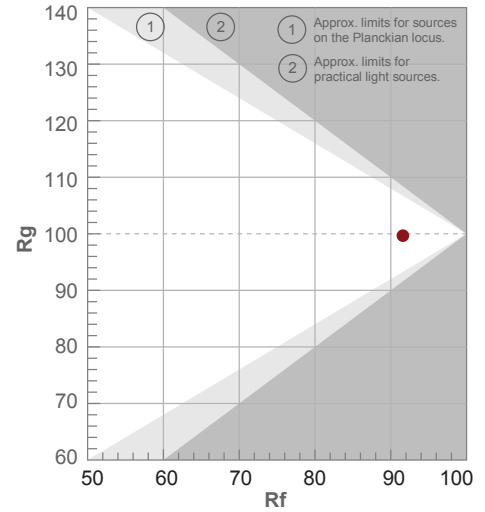
Note: specifications are representative of the diode type and not a particular tape light article.

3000K

Rf 91.6
Fidelity index Rf

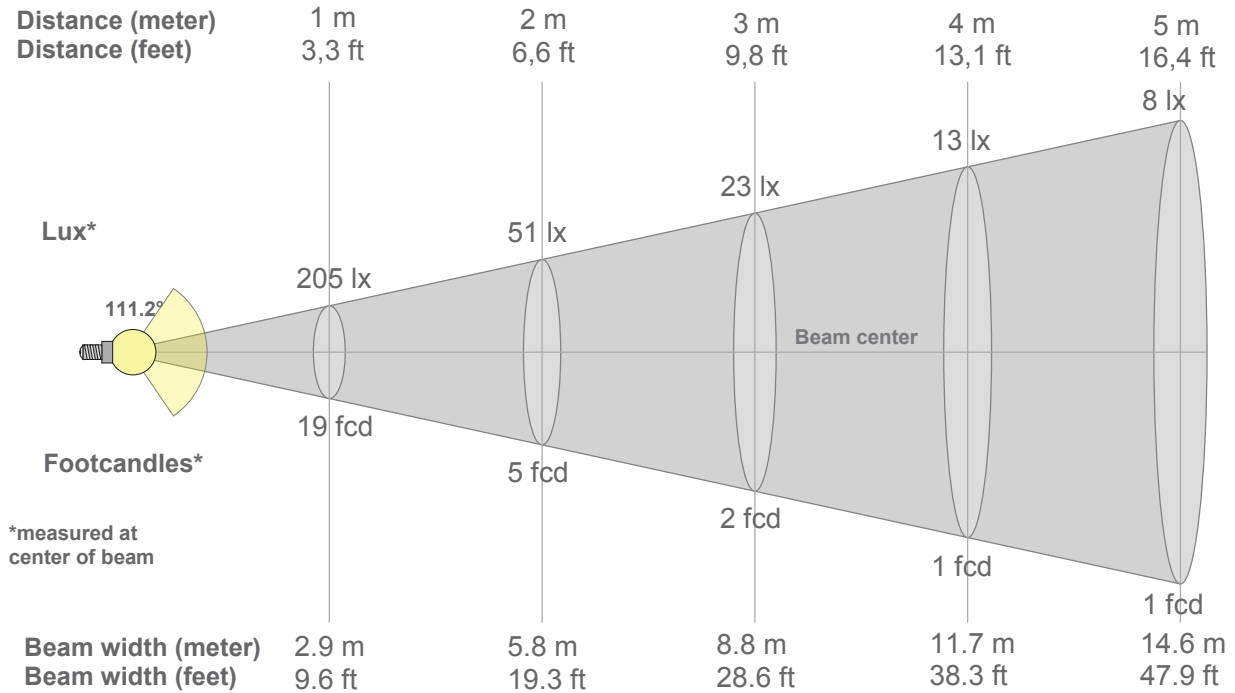
Rg 99.7
Gammut index Rg

Hue Bin	R _f	Graphic shifts (%)	
		Chroma	Hue
1	91	-4%	0%
2	92	-3%	3%
3	90	-1%	4%
4	95	0%	2%
5	94	-2%	2%
6	96	2%	0%
7	93	-2%	-1%
8	98	-1%	0%
9	94	-1%	3%
10	90	0%	6%
11	89	2%	7%
12	89	5%	1%
13	91	3%	-5%
14	87	4%	-8%
15	89	-1%	-6%
16	86	-2%	-10%



Note: specifications are representative of the diode type and not a particular tape light article.

3000K



Beam intensities from 1-20m

1m	2m	3m	4m	5m	6m	7m	8m	9m	10m	11m	12m	13m	14m	15m	16m	17m	18m	19m	20m
3.3ft	6.6ft	9.8ft	13.1ft	16.4ft	19.7ft	23ft	26.2ft	29.5ft	32.8ft	36.1ft	39.4ft	42.7ft	45.9ft	49.2ft	52.5ft	55.8ft	59.1ft	62.3ft	65.6ft
205lx	51lx	23lx	13lx	8lx	6lx	4lx	3lx	3lx	2lx	2lx	1lx	1lx	1lx	1lx	1lx	1lx	1lx	1lx	1lx
19fcd	4.8fcd	2.1fcd	1.2fcd	0.8fcd	0.5fcd	0.4fcd	0.3fcd	0.2fcd	0.2fcd	0.2fcd	0.1fcd	0.1fcd	0.1fcd	0.1fcd	0.1fcd	0.1fcd	0.1fcd	0.1fcd	0fcd

Intensities in 0° c-plane

0°	5°	10°	15°	20°	25°	30°	35°	40°	45°	50°	55°	60°	65°	70°	75°	80°	85°	90°	95°
205	204	201	196	189	180	170	159	146	133	119	104	89	73	57	40	24	10	2	1
100%	100%	98%	96%	92%	88%	83%	78%	72%	65%	58%	51%	43%	36%	28%	20%	12%	5%	1%	0%

Intensities in 90° c-plane

0°	5°	10°	15°	20°	25°	30°	35°	40°	45°	50°	55°	60°	65°	70°	75°	80°	85°	90°	95°
205	204	201	196	189	180	170	159	146	133	119	104	89	73	57	40	24	10	2	1
100%	100%	98%	96%	92%	88%	83%	78%	72%	65%	58%	51%	43%	36%	28%	20%	12%	5%	1%	0%

Intensities in 180° c-plane

0°	5°	10°	15°	20°	25°	30°	35°	40°	45°	50°	55°	60°	65°	70°	75°	80°	85°	90°	95°
205	204	201	196	189	180	170	159	146	133	119	104	89	73	57	40	24	11	3	1
100%	99%	98%	96%	92%	88%	83%	78%	72%	65%	58%	51%	43%	36%	28%	20%	12%	5%	1%	0%

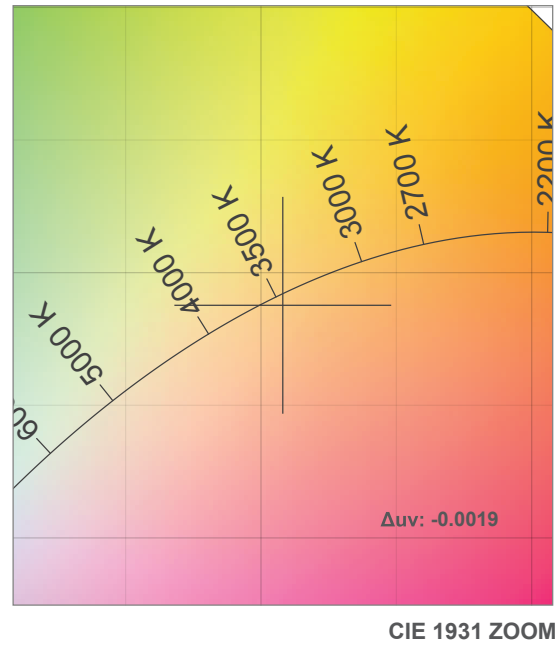
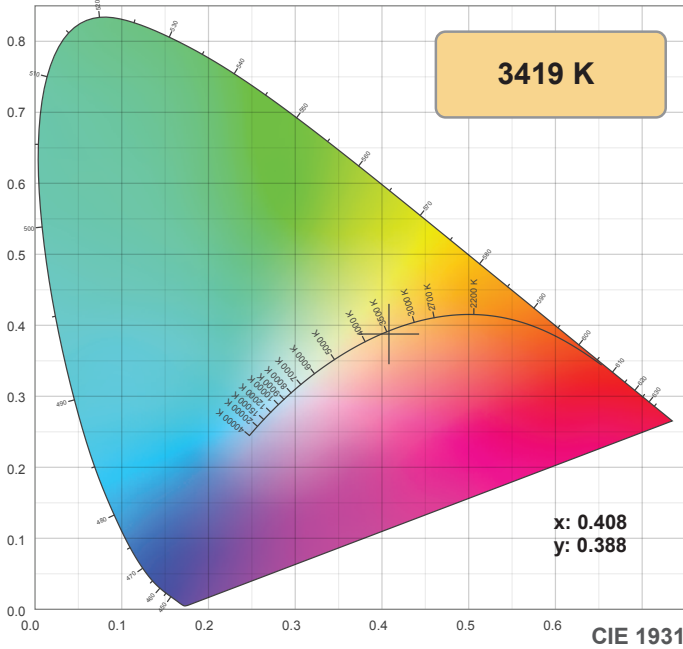
Intensities in 270° c-plane

0°	5°	10°	15°	20°	25°	30°	35°	40°	45°	50°	55°	60°	65°	70°	75°	80°	85°	90°	95°
205	204	201	196	189	180	170	159	146	133	119	104	89	73	57	40	24	11	3	1
100%	99%	98%	96%	92%	88%	83%	78%	72%	65%	58%	51%	43%	36%	28%	20%	12%	5%	1%	0%

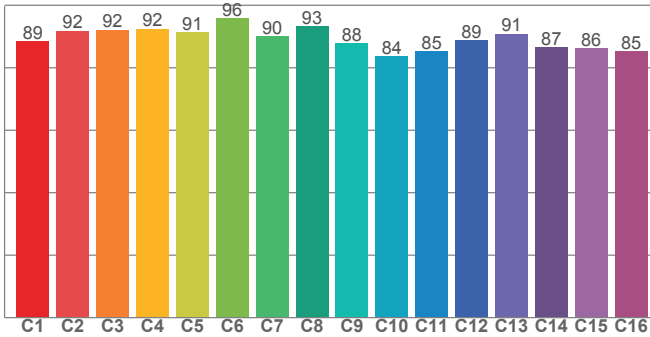
Beam angle 50%	Field angle 10%	Cutoff angle 2,5%	Intensity ratio in 120° cone	Intensity ratio in 90° cone
111.2°	162.5°	175.4°	77.2%	52.6%

Note: specifications are representative of the diode type and not a particular tape light article.

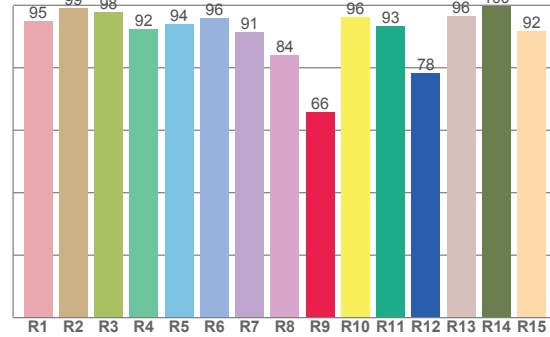
3500K



TM30: 89.3



CRI: 93.6 (R1-R8)



CRI R values, only R1-R8 are used to calculate final CRI value

R1	R2	R3	R4	R5	R6	R7	R8	R9	R10	R11	R12	R13	R14	R15
94.8	98.9	97.7	92.4	94.1	95.8	91.4	84.1	65.9	96.3	93.2	78.2	96.5	99.7	91.8

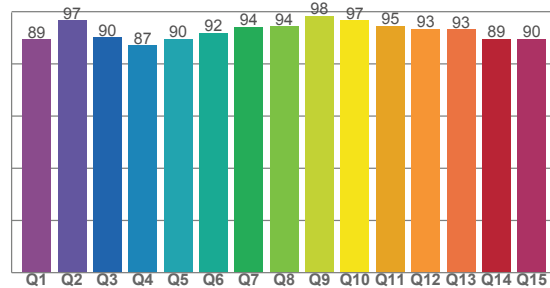
TM30 C values, 16 binned values out of total of 99 C values

C1	C2	C3	C4	C5	C6	C7	C8	C9	C10	C11	C12	C13	C14	C15	C16
88.5	91.9	92.1	92.5	91.3	95.8	90.1	93.3	87.9	83.7	85.2	88.9	90.8	86.6	86.3	85.2

CQS Q values

Q1	Q2	Q3	Q4	Q5	Q6	Q7	Q8	Q9	Q10	Q11	Q12	Q13	Q14	Q15
89.3	96.6	90.1	87.1	89.6	91.9	94.1	94.3	98.4	96.7	94.5	93.4	93.1	89.5	89.6

CQS: 91.9



Color parameters

Color temperature	Color rendering index	Red component	Color fidelity	Color gamut	Color quality scale	Color coordinate cie 1931	Color coordinate cie 1931	Color coordinate	Color coordinate	Color deviation from black body
CCT	CRI	CRI R9	TM30 Rf	TM30 Rg	CQS	x	y	u	v	Δuv
3419 K	93.6	65.9	89.3	97.6	91.9	0.408	0.388	0.239	0.340	-0.0019

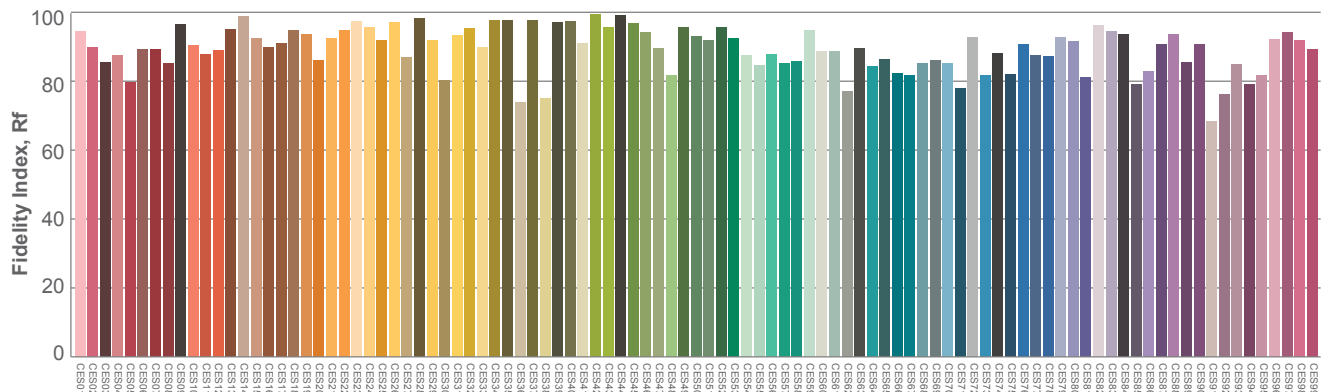
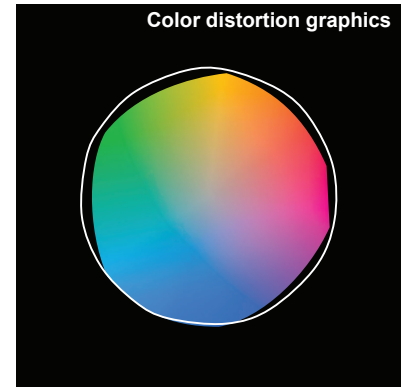
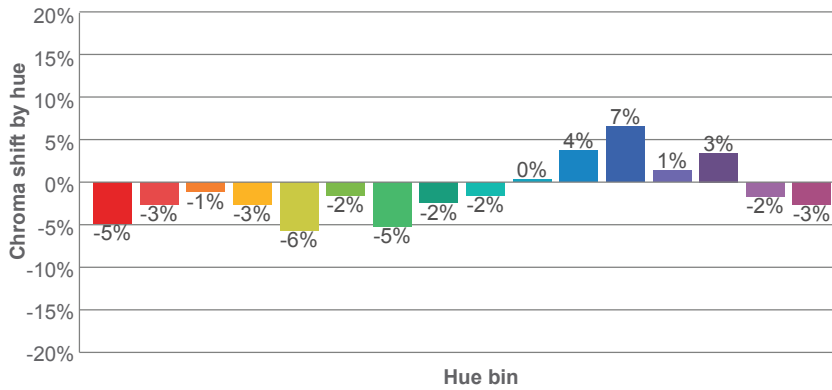
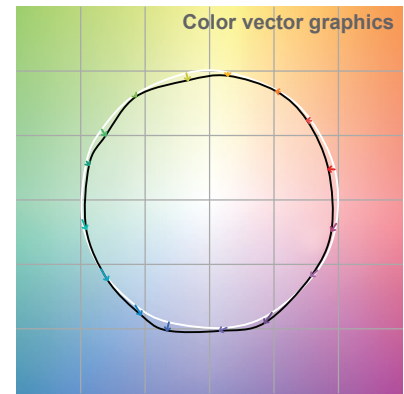
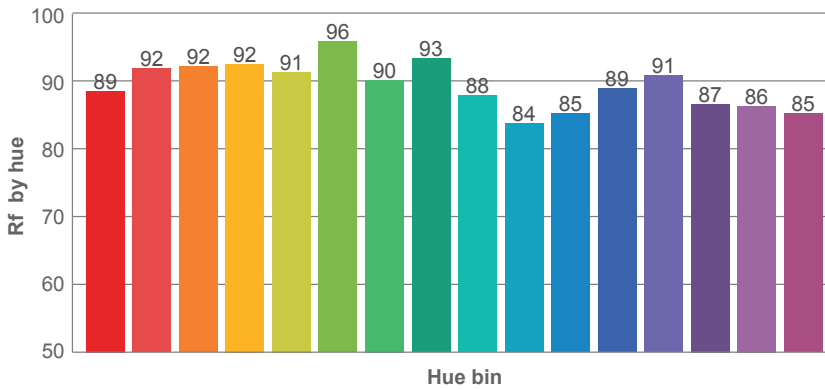
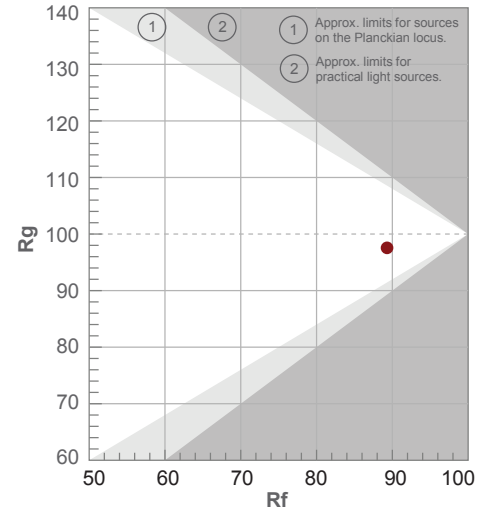
Note: specifications are representative of the diode type and not a particular tape light article.

3500K

Rf 89.3
Fidelity index Rf

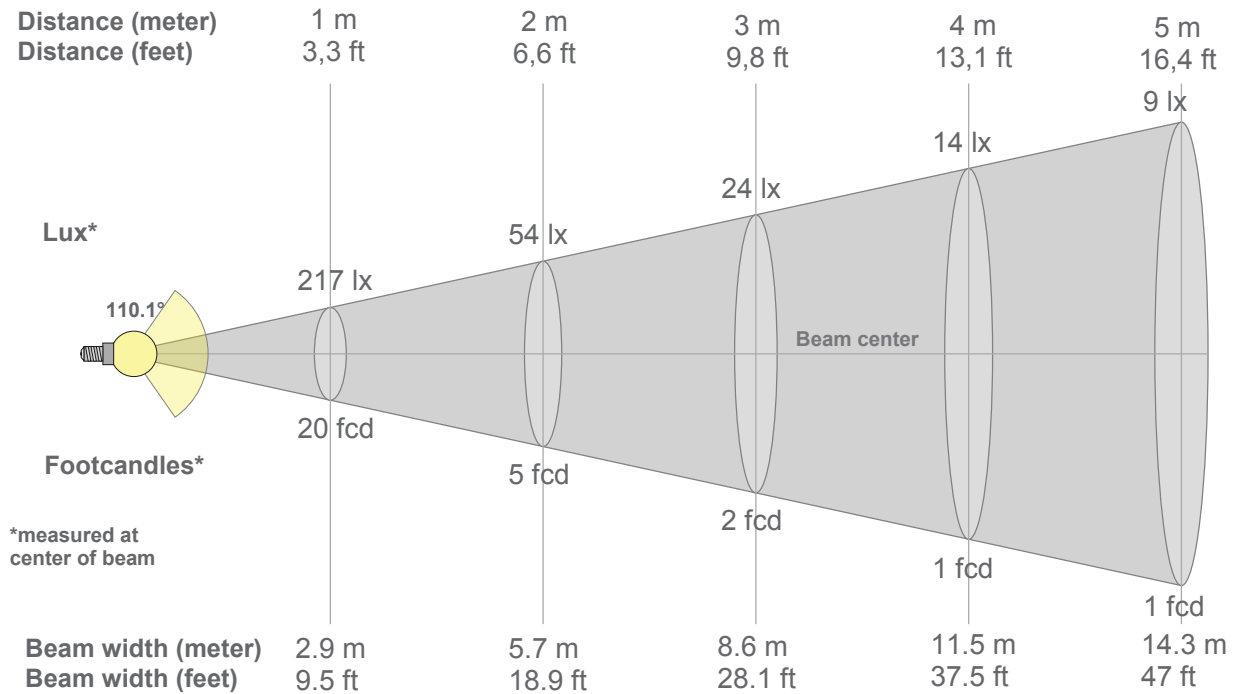
Rg 97.6
Gammut index Rg

Hue Bin	R _f	Graphic shifts (%)	
		Chroma	Hue
1	89	-5%	1%
2	92	-3%	2%
3	92	-1%	3%
4	92	-3%	0%
5	91	-6%	0%
6	96	-2%	0%
7	90	-5%	2%
8	93	-2%	2%
9	88	-2%	8%
10	84	0%	10%
11	85	4%	8%
12	89	7%	0%
13	91	1%	-6%
14	87	3%	-9%
15	86	-2%	-7%
16	85	-3%	-6%



Note: specifications are representative of the diode type and not a particular tape light article.

3500K



Beam intensities from 1-20m

1m	2m	3m	4m	5m	6m	7m	8m	9m	10m	11m	12m	13m	14m	15m	16m	17m	18m	19m	20m
3.3ft	6.6ft	9.8ft	13.1ft	16.4ft	19.7ft	23ft	26.2ft	29.5ft	32.8ft	36.1ft	39.4ft	42.7ft	45.9ft	49.2ft	52.5ft	55.8ft	59.1ft	62.3ft	65.6ft
217lx	54lx	24lx	14lx	9lx	6lx	4lx	3lx	3lx	2lx	2lx	2lx	1lx	1lx	1lx	1lx	1lx	1lx	1lx	1lx
20.2fcd	5.1fcd	2.2fcd	1.3fcd	0.8fcd	0.6fcd	0.4fcd	0.3fcd	0.2fcd	0.2fcd	0.2fcd	0.1fcd	0.1fcd	0.1fcd	0.1fcd	0.1fcd	0.1fcd	0.1fcd	0.1fcd	0.1fcd

Intensities in 0° c-plane

0°	5°	10°	15°	20°	25°	30°	35°	40°	45°	50°	55°	60°	65°	70°	75°	80°	85°	90°	95°
217	216	213	207	200	190	179	167	154	140	125	109	93	76	59	41	25	11	3	1
100%	99%	98%	95%	92%	87%	83%	77%	71%	64%	57%	50%	43%	35%	27%	19%	11%	5%	1%	0%

Intensities in 90° c-plane

0°	5°	10°	15°	20°	25°	30°	35°	40°	45°	50°	55°	60°	65°	70°	75°	80°	85°	90°	95°
217	216	213	207	200	190	179	167	154	140	125	109	93	76	59	41	25	11	3	1
100%	99%	98%	95%	92%	87%	83%	77%	71%	64%	57%	50%	43%	35%	27%	19%	11%	5%	1%	0%

Intensities in 180° c-plane

0°	5°	10°	15°	20°	25°	30°	35°	40°	45°	50°	55°	60°	65°	70°	75°	80°	85°	90°	95°
217	216	212	207	199	190	179	167	154	139	125	109	93	76	59	42	26	12	3	1
100%	99%	98%	95%	92%	87%	82%	77%	71%	64%	57%	50%	43%	35%	27%	19%	12%	5%	1%	0%

Intensities in 270° c-plane

0°	5°	10°	15°	20°	25°	30°	35°	40°	45°	50°	55°	60°	65°	70°	75°	80°	85°	90°	95°
217	216	212	207	199	190	179	167	154	139	125	109	93	76	59	42	26	12	3	1
100%	99%	98%	95%	92%	87%	82%	77%	71%	64%	57%	50%	43%	35%	27%	19%	12%	5%	1%	0%

Beam angle 50%	Field angle 10%	Cutoff angle 2,5%	Intensity ratio in 120° cone	Intensity ratio in 90° cone
110.1°	162.2°	175.4°	77.3%	52.8%