

Light efficiency:

n/a Lumen/Watt

Light quality:

CRI: 95.7

Color temperature:

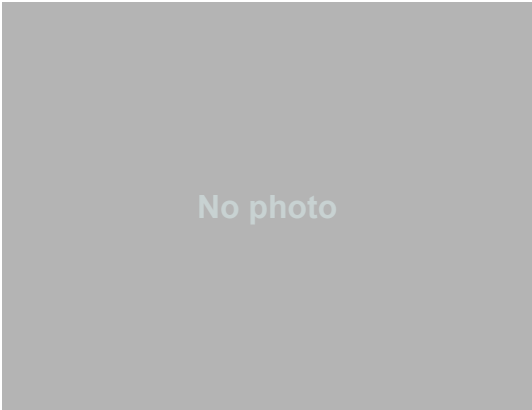
4266 K

Output: 612 lm/ft

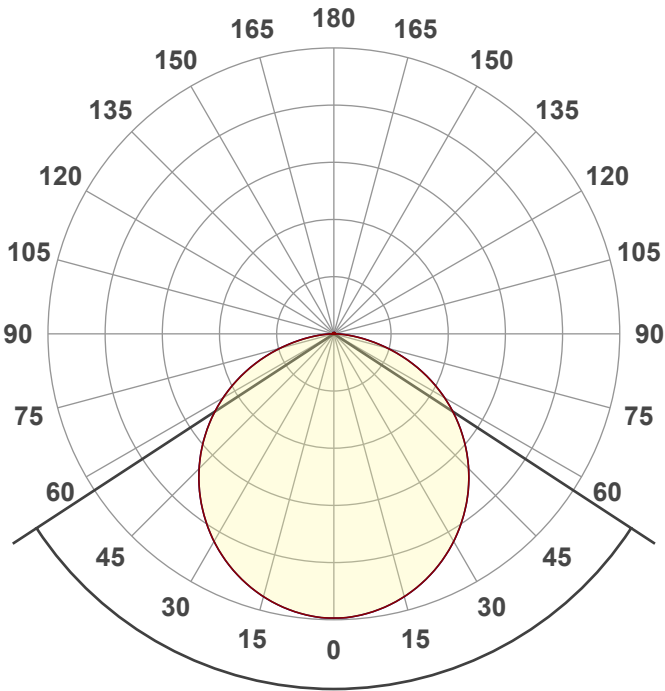
Peak: 210 cd

Power: - W

PF: n/a



Product name:
Suspan X PrimaLine 9 -4200K
Item number:
AL-01-22-2403-CU-IN
Date and time:
10/11/2023 8:06:08 AM
Description:

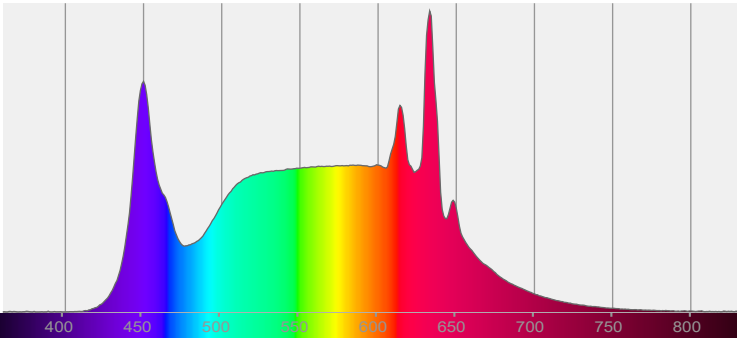


Beam angle **113.7°**

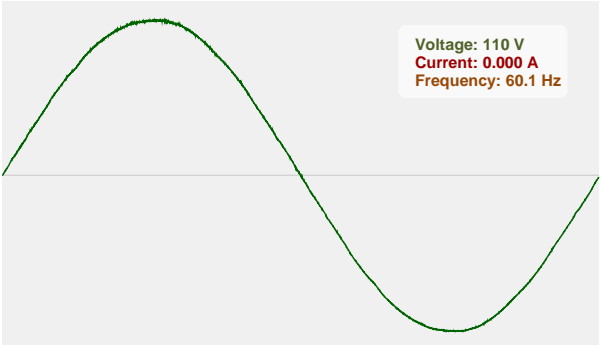


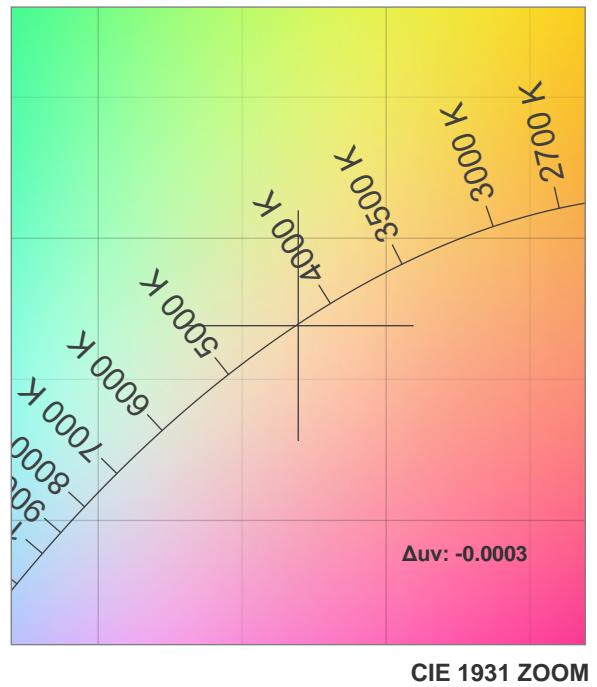
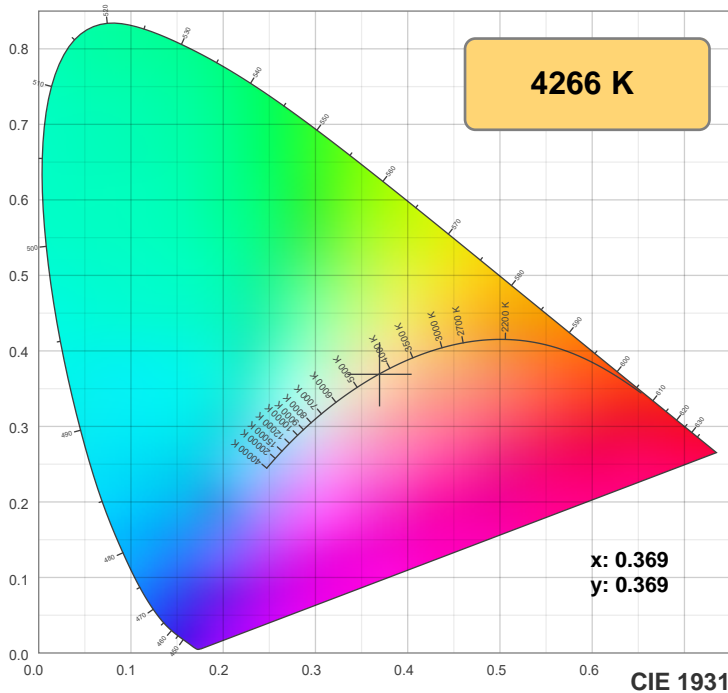
CIE 1931
x: 0.369
y: 0.369

Spectra

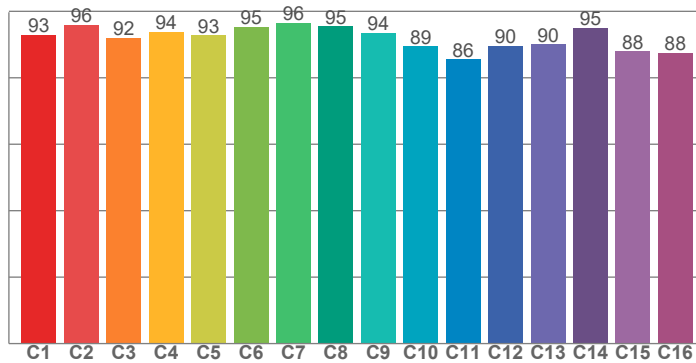


Power

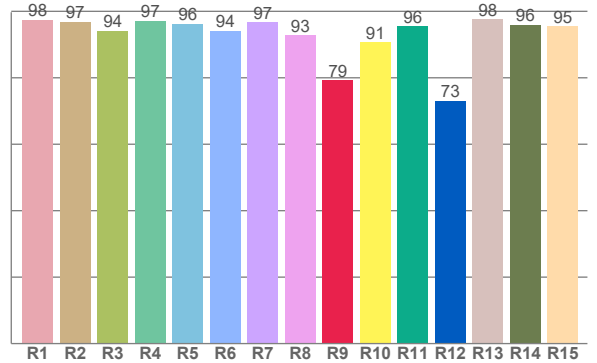




TM-30: 91.9



CRI: 95.7 (R1-R8)



CRI R values, only R1-R8 are used to calculate final CRI value

R1	R2	R3	R4	R5	R6	R7	R8	R9	R10	R11	R12	R13	R14	R15
97.5	96.8	94.1	97.1	96.3	94.1	96.7	92.9	79.3	90.6	95.5	73.1	97.5	96.0	95.5

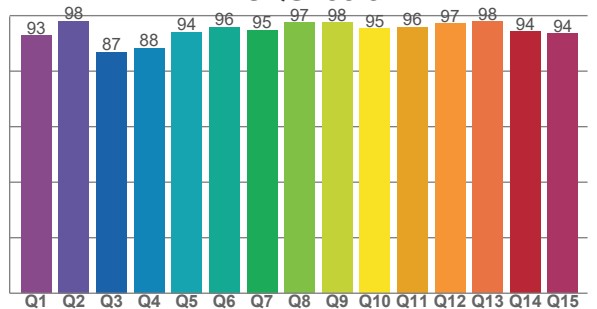
TM30 C values, 16 binned values out of total of 99 C values

C1	C2	C3	C4	C5	C6	C7	C8	C9	C10	C11	C12	C13	C14	C15	C16
93.0	95.9	91.9	93.9	92.8	95.3	96.5	95.4	93.5	89.5	85.5	89.6	90.1	95.0	88.0	87.5

CQS Q values

Q1	Q2	Q3	Q4	Q5	Q6	Q7	Q8	Q9	Q10	Q11	Q12	Q13	Q14	Q15
92.9	98.1	86.8	88.3	94.0	95.9	94.8	97.5	97.5	95.3	95.9	97.1	97.9	94.2	93.5

CQS: 93.8



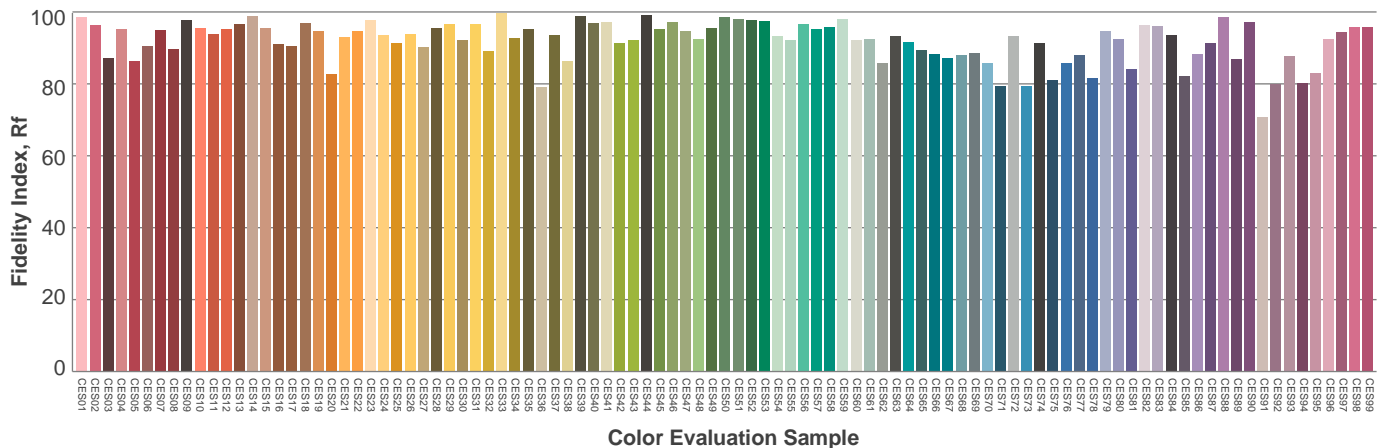
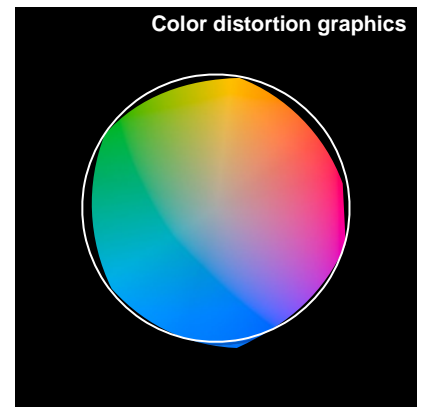
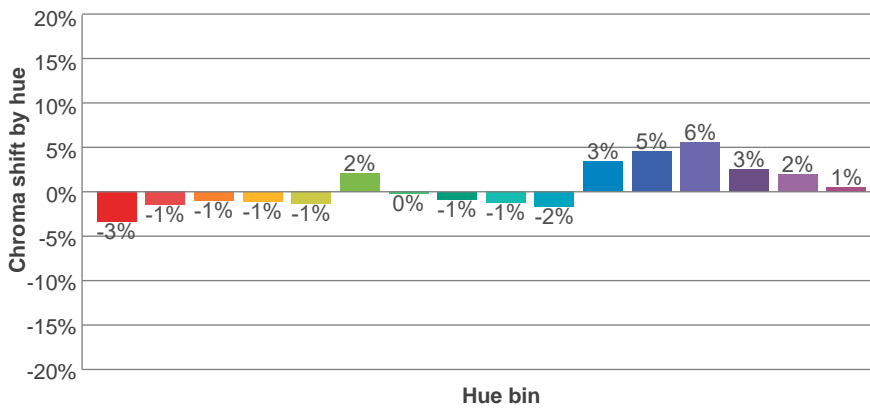
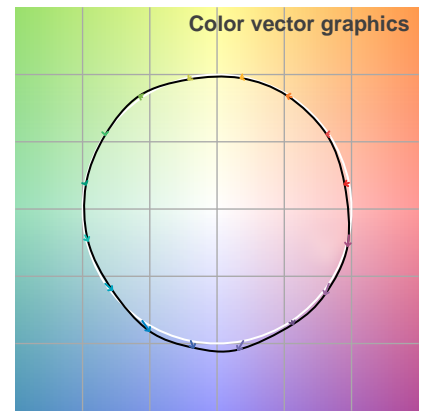
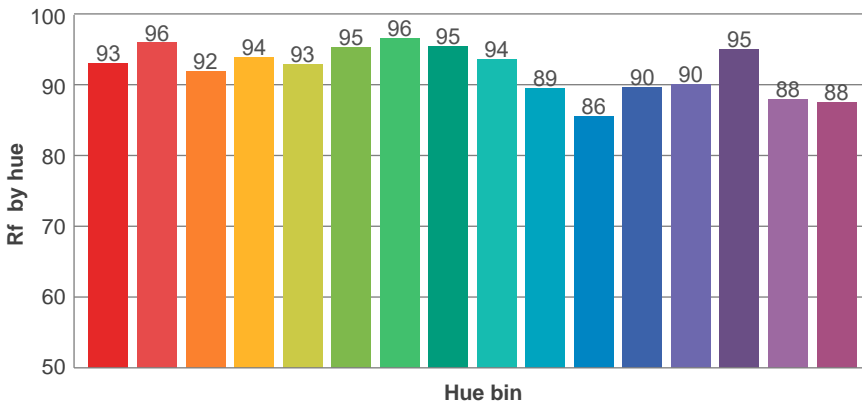
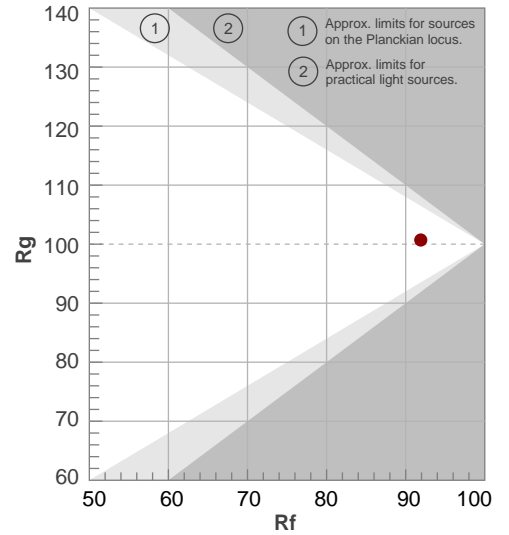
Color parameters

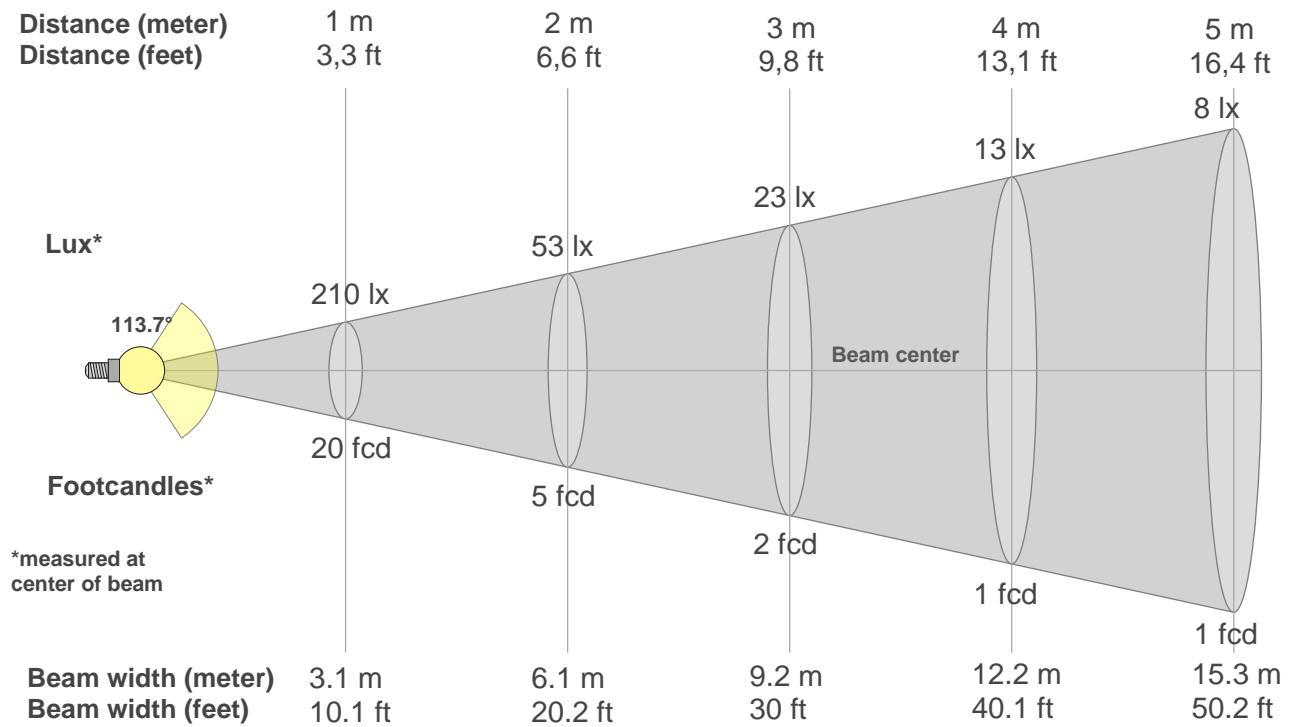
Color temperature	Color rendering index	Red component	Color fidelity	Color gamut	Color quality scale	Color coordinate cie 1931	Color coordinate cie 1931	Color coordinate	Color coordinate	Color deviation from black body
CCT	CRI	CRI R9	TM30 Rf	TM30 Rg	CQS	x	y	u	v	Δuv
4266 K	95.7	79.3	91.9	100.7	93.8	0.369	0.369	0.221	0.331	-0.0003

Rf 91.9
Fidelity index Rf

Rg 100.7
Gamut index Rg

Hue Bin	R _f	Shifts (%)	
		Chroma	Hue
1	93	-3%	0%
2	96	-1%	1%
3	92	-1%	4%
4	94	-1%	2%
5	93	-1%	2%
6	95	2%	1%
7	96	0%	0%
8	95	-1%	1%
9	94	-1%	4%
10	89	-2%	7%
11	86	3%	8%
12	90	5%	3%
13	90	6%	-5%
14	95	3%	-1%
15	88	2%	-8%
16	88	1%	-8%





Beam intensities from 1-20m

1m	2m	3m	4m	5m	6m	7m	8m	9m	10m	11m	12m	13m	14m	15m	16m	17m	18m	19m	20m
3.3ft	6.6ft	9.8ft	13.1ft	16.4ft	19.7ft	23ft	26.2ft	29.5ft	32.8ft	36.1ft	39.4ft	42.7ft	45.9ft	49.2ft	52.5ft	55.8ft	59.1ft	62.3ft	65.6ft
210lx	53lx	23lx	13lx	8lx	6lx	4lx	3lx	3lx	2lx	2lx	1lx	1lx	1lx	1lx	1lx	1lx	1lx	1lx	1lx
19.5fcd	4.9fcd	2.2fcd	1.2fcd	0.8fcd	0.5fcd	0.4fcd	0.3fcd	0.2fcd	0.2fcd	0.2fcd	0.1fcd	0.1fcd	0.1fcd	0.1fcd	0.1fcd	0.1fcd	0.1fcd	0.1fcd	0fcd

Intensities in 0° c-plane

0°	5°	10°	15°	20°	25°	30°	35°	40°	45°	50°	55°	60°	65°	70°	75°	80°	85°	90°	95°
210	209	206	201	195	187	177	166	154	141	127	111	95	77	59	41	24	10	2	1
100%	99%	98%	96%	93%	89%	84%	79%	73%	67%	60%	53%	45%	37%	28%	20%	11%	5%	1%	0%

Intensities in 90° c-plane

0°	5°	10°	15°	20°	25°	30°	35°	40°	45°	50°	55°	60°	65°	70°	75°	80°	85°	90°	95°
210	209	206	201	195	187	177	166	154	141	127	111	95	77	59	41	24	10	2	1
100%	99%	98%	96%	93%	89%	84%	79%	73%	67%	60%	53%	45%	37%	28%	20%	11%	5%	1%	0%

Intensities in 180° c-plane

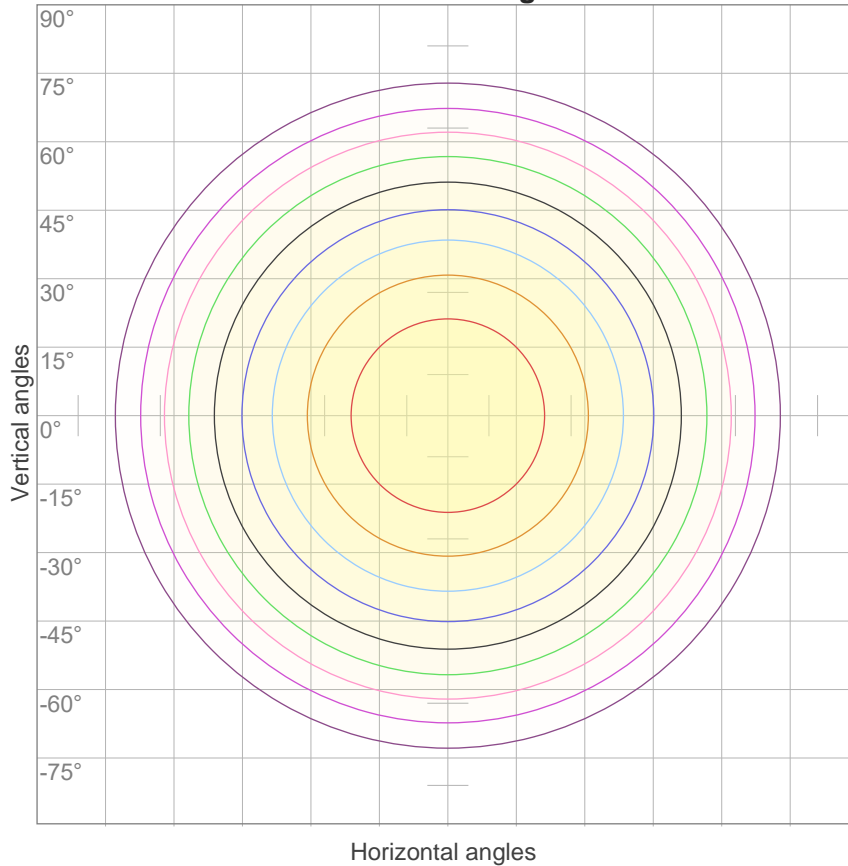
0°	5°	10°	15°	20°	25°	30°	35°	40°	45°	50°	55°	60°	65°	70°	75°	80°	85°	90°	95°
210	209	206	201	195	187	177	166	154	141	127	111	95	77	59	41	24	10	2	1
100%	99%	98%	96%	93%	89%	84%	79%	73%	67%	60%	53%	45%	37%	28%	20%	11%	5%	1%	0%

Intensities in 270° c-plane

0°	5°	10°	15°	20°	25°	30°	35°	40°	45°	50°	55°	60°	65°	70°	75°	80°	85°	90°	95°
210	209	206	201	195	187	177	166	154	141	127	111	95	77	59	41	24	10	2	1
100%	99%	98%	96%	93%	89%	84%	79%	73%	67%	60%	53%	45%	37%	28%	20%	11%	5%	1%	0%

Beam angle 50%	Field angle 10%	Cutoff angle 2,5%	Intensity ratio in 120° cone	Intensity ratio in 90° cone
113.7°	161.9°	174.2°	77.6%	52.5%

iso-candela diagram



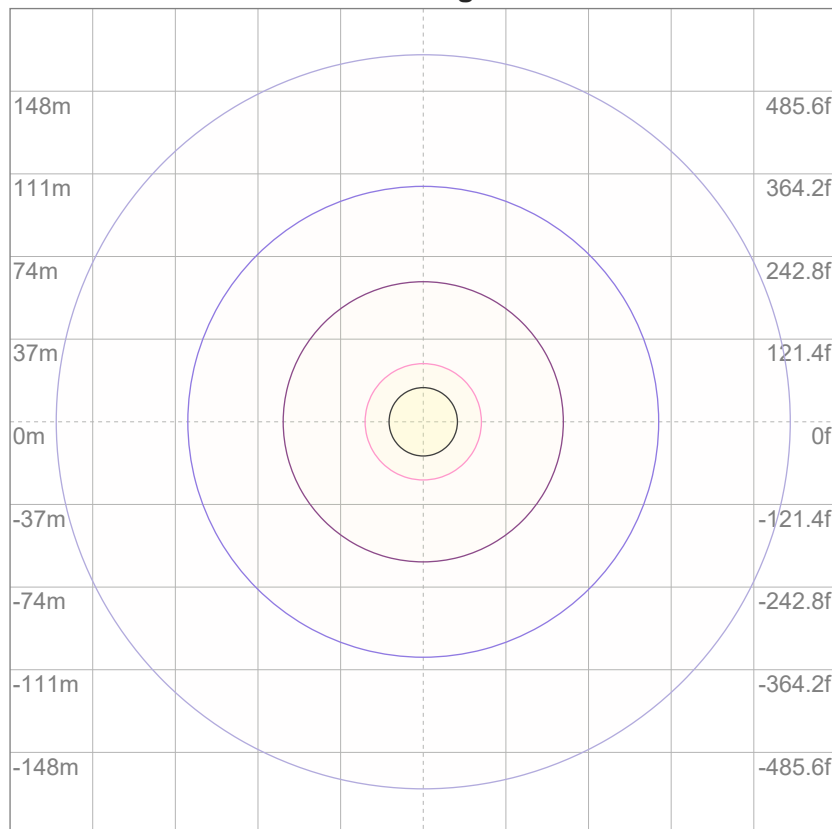
10%	21 cd
20%	42 cd
30%	63 cd
40%	84 cd
50%	105 cd
60%	126 cd
70%	147 cd
80%	168 cd
90%	189 cd

Conditions:

Number of c-planes: 12

Candela at center: 210 cd

iso-lux diagram



Mounting height: 10 meters (33 feet)

3%	63.1m lx
5%	0.105 lx
10%	0.210 lx
30%	0.631 lx
50%	1.05 lx

Conditions:

Number of c-planes: 12

Lux at center: 2.10 lx

Lux distribution on a surface when lamp is mounted at 10 meters from the surface.

Glare evaluation according to UGR

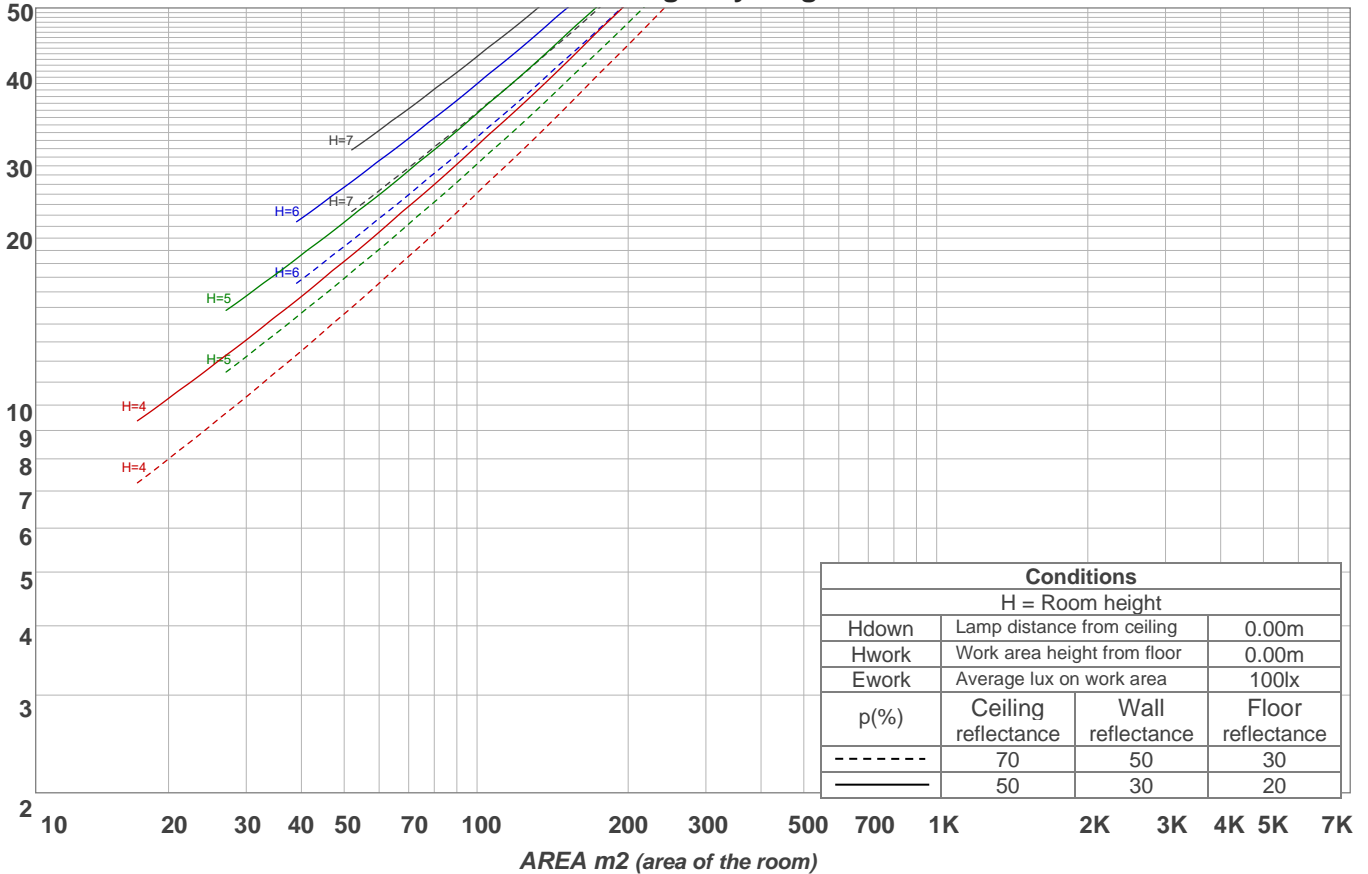
p Ceiling		70	70	50	50	30	70	70	50	50	30
p Walls		50	30	50	30	30	50	30	50	30	30
p Floor		20	20	20	20	20	20	20	20	20	20
Room size X Y		Viewing direction at right angles to lamp axis					Viewing direction parallel to lamp axis				
2H	2H	19.6	20.8	19.8	21.1	21.4	21.1	22.3	21.3	22.6	22.9
	3H	20.6	21.9	21.0	22.1	22.4	22.4	23.7	22.9	24.0	24.2
	4H	21.0	22.2	21.4	22.5	22.7	23.0	24.2	23.4	24.5	24.8
	6H	21.2	22.3	21.5	22.6	23.0	23.4	24.5	23.8	24.8	25.2
	8H	21.2	22.3	21.6	22.6	23.0	23.5	24.5	23.9	24.9	25.3
	12H	21.2	22.2	21.6	22.6	23.0	23.5	24.5	23.9	24.9	25.3
4H	2H	20.1	21.3	20.6	21.6	21.9	21.3	22.6	21.8	22.8	23.1
	3H	21.4	22.4	21.8	22.8	23.3	23.0	24.0	23.4	24.3	24.8
	4H	21.8	22.7	22.3	23.2	23.7	23.6	24.5	24.0	24.9	25.5
	6H	22.1	22.9	22.6	23.3	23.7	24.0	24.9	24.5	25.2	25.6
	8H	22.1	22.9	22.6	23.3	23.7	24.1	24.9	24.6	25.3	25.7
	12H	22.1	22.8	22.6	23.2	23.7	24.2	24.8	24.7	25.3	25.8
8H	4H	22.0	22.8	22.5	23.2	23.6	23.6	24.4	24.2	24.8	25.2
	6H	22.4	23.0	22.9	23.5	24.0	24.2	24.8	24.7	25.2	25.8
	8H	22.5	23.0	23.0	23.6	24.2	24.3	24.9	24.9	25.4	26.1
	12H	22.5	23.0	23.1	23.5	24.1	24.4	24.9	25.0	25.4	26.0
12H	4H	22.0	22.7	22.5	23.1	23.6	23.6	24.3	24.1	24.7	25.2
	6H	22.4	23.0	22.9	23.5	24.1	24.2	24.7	24.7	25.2	25.9
	8H	22.5	23.0	23.1	23.5	24.1	24.3	24.8	24.9	25.3	25.9
Variation of the observer position for the luminaire distance S											
S = 1.0H		0.1 / -0.2					0.1 / -0.1				
S = 1.5H		0.3 / -0.5					0.4 / -0.5				
S = 2.0H		0.7 / -1.0					1.0 / -1.1				
CIE 117-1995. Corrected glare indices referring to 612 lm total luminous flux											

Coefficients of Utilization

Ceiling reflectance	80				70				50			30			10			0	
	70	50	30	10	70	50	30	10	50	30	10	50	30	10	50	30	10	0	
Wall reflectance	70	50	30	10	70	50	30	10	50	30	10	50	30	10	50	30	10	0	
Floor reflectance	20	20	20	20	20	20	20	20	20	20	20	20	20	20	20	20	20	20	0
RCR	(RCR: Room Cavity Ratio) Room Values are expressed as percentage of Lumens delivered to the task surface																		
0	119	119	119	119	116	116	116	116	111	111	111	106	106	106	101	101	101	99	
1	108	104	99	95	106	101	97	94	97	94	91	93	90	88	89	87	85	83	
2	98	90	83	77	96	88	82	76	84	79	74	81	77	73	78	74	71	69	
3	90	79	71	64	87	77	70	63	74	68	62	71	66	61	69	64	60	58	
4	82	70	61	54	80	68	60	54	66	59	53	63	57	52	61	56	51	49	
5	75	62	53	47	73	61	53	46	59	51	46	57	50	45	55	49	44	42	
6	70	56	47	41	68	55	47	40	53	46	40	51	45	39	50	44	39	37	
7	64	51	42	36	63	50	42	36	48	41	35	47	40	35	45	39	35	33	
8	60	46	38	32	58	46	37	32	44	37	31	43	36	31	42	35	31	29	
9	56	42	34	29	54	42	34	29	41	33	28	39	33	28	38	32	28	26	
10	52	39	31	26	51	39	31	26	38	31	26	37	30	26	36	30	25	24	

LAMPS (number of lamps)

Luminaire budgetary diagram



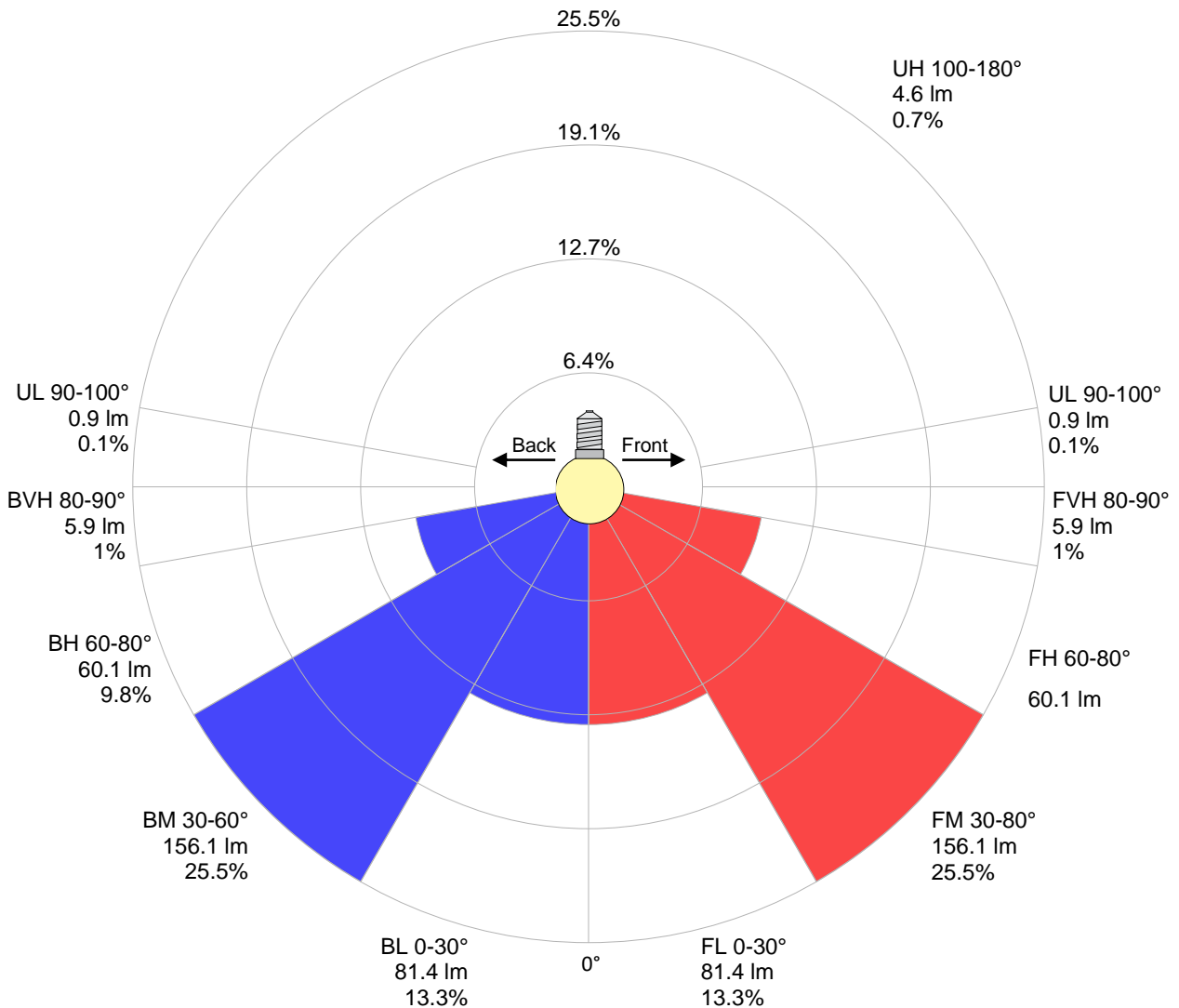
Zonal Lumen Summary

0°-10°	10°-20°	20°-30°	30°-40°	40°-50°	50°-60°	60°-70°	70°-80°	80°-90°
{LUM0-10}	56.8 lm	86.1 lm	104 lm	109 lm	99.3 lm	76.5 lm	43.7 lm	11.6 lm
90°-100°	100°-110°	110°-120°	120°-130°	130°-140°	140°-150°	150°-160°	160°-170°	170°-180°
0.872 lm	0.768 lm	0.789 lm	0.793 lm	0.721 lm	0.614 lm	0.479 lm	0.314 lm	0.111 lm

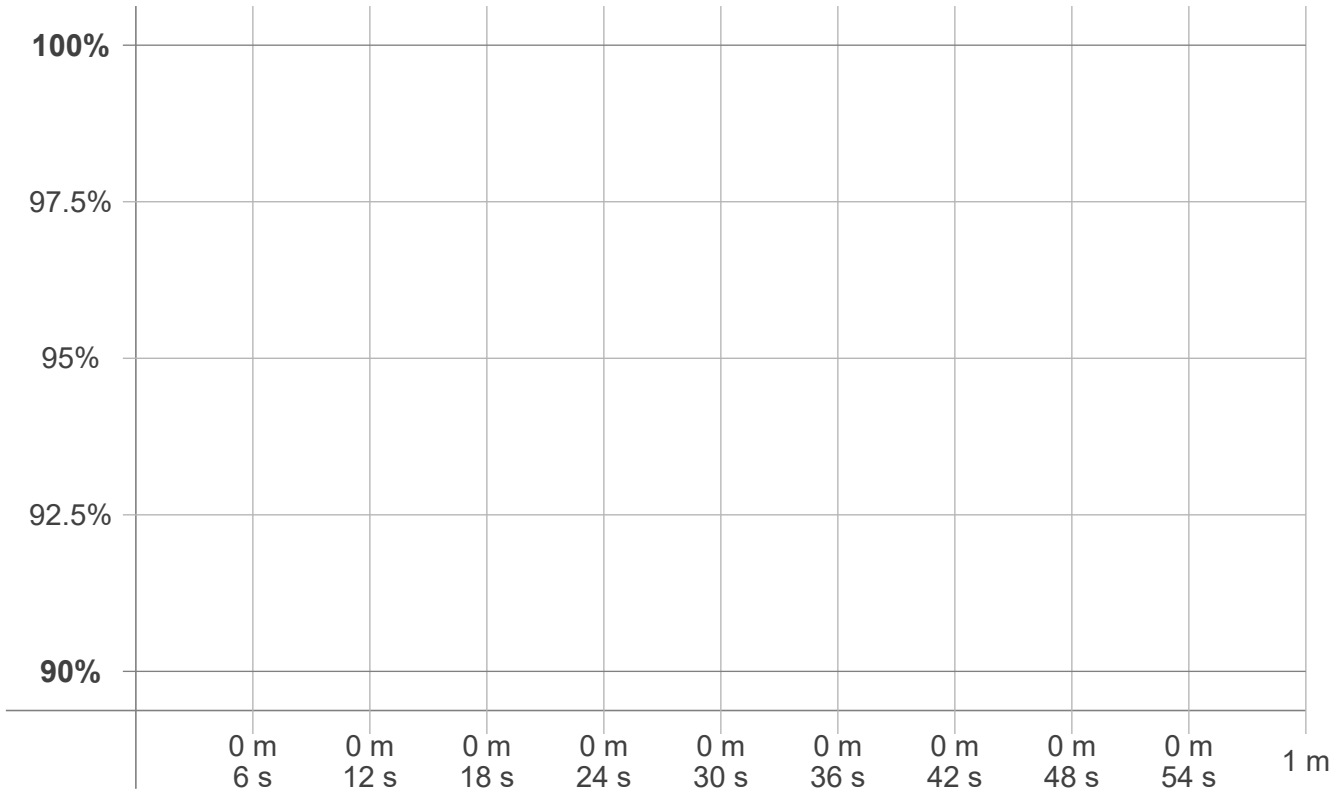
LCS table

BUG rating:	B0 U1 G0	
Forward light	Lumens	Lumens %
Low(0-30):	81.4	13.3%
Medium(30-60):	156.1	25.5%
High(60-80):	60.1	9.8%
Very high(80-90):	5.9	1%
Back light		
Low(0-30):	81.4	13.3%
Medium(30-60):	156.1	25.5%
High(60-80):	60.1	9.8%
Very high(80-90):	5.9	1%
Uplight		
Low(90-100):	0.9	0.1%
High(100-180):	4.6	0.7%

LCS graph



Warmup curve



Warmup result

Warmup time:	n/a
Warmup variation	n/a%

Warmup conditions

Stable period:	n/a
Stable change max:	n/a%
Minimum time:	n/a

Color temperature change

CCT start	CCT change	CCT end
n/a K	n/a K	4266 K

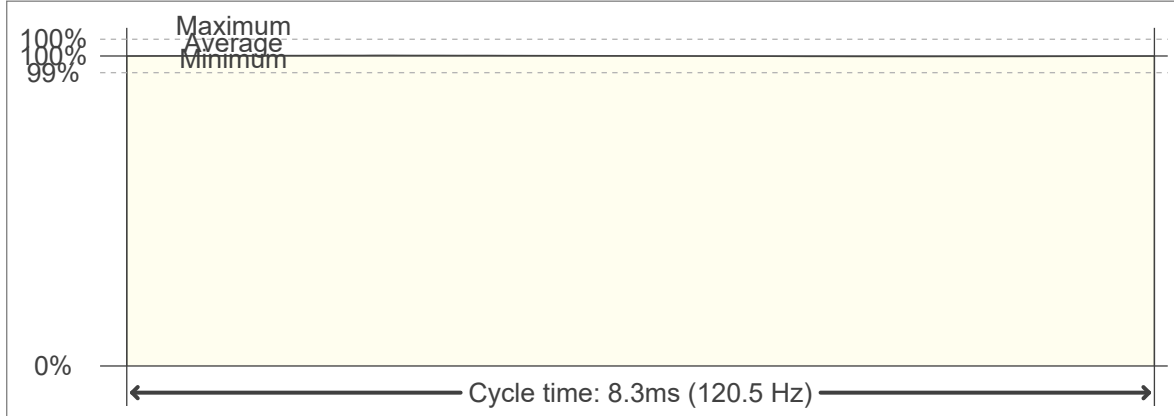
Output change

Output start	Output change	Output end
n/a lm	n/a lm	612 lm

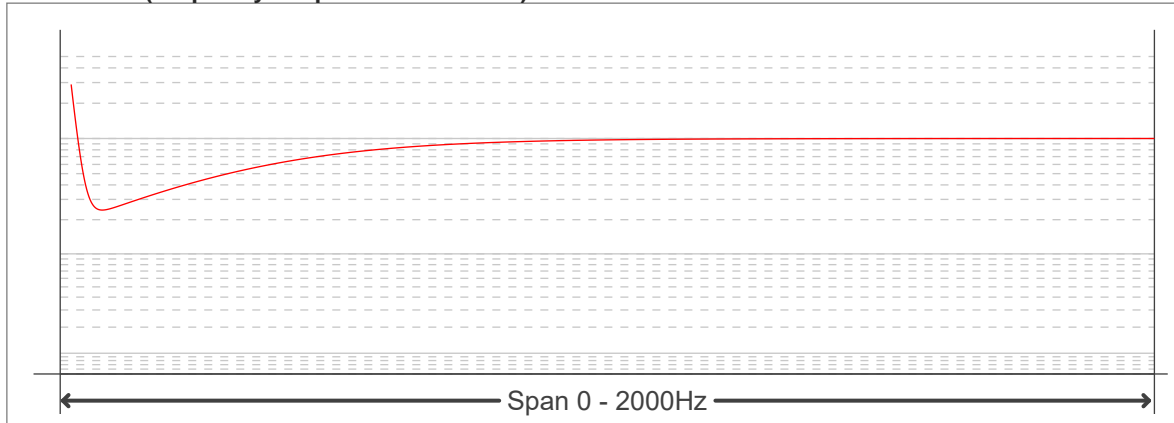
Flicker curve (complete sampled flicker signal)



Flicker frame (frame of one flicker period)



Flicker FFT (frequency scope of flicker curve)



Flicker results:

Flicker frequency:		120.48 Hz	
Flicker index:	0	JA8/10 40Hz	0.32 %
Flicker percentage:	0.54 %	JA8/10 90Hz	0.33 %
SVM: (Visual flicker)	0.01	JA8/10 200Hz	0.53 %
PstLM	0	JA8/10 400Hz	0.54 %
Mp	0.05	JA8/10 1000Hz	0.54 %

Flicker conditions:

Sample rate:	20000 samples/second
--------------	----------------------